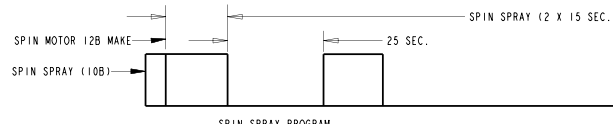
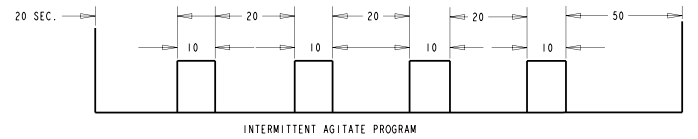


ENGLISH	FRENCH	SPANISH
AGITATE	AGITAN	AGITAN
BLEACH	BLANCHIMENT	BLANQUEO
BUZZER	VIBEUR	SEÑAL SONORA
BYPASS	DERIVATION	PUNENTE
DRAIN	VIDENT	DREAN
EXTRA RINSE	RINCAGE DE PLUS	ADICIONAL ACLARACION
FILL	REMPLISSAGE	LLENAN
HIGH	HAUT	ALTO
INT AGITATE	AGITER INTERMITTENT	INTERMITENTE AGITE
LO	LENT	BAJO
MED	MED	MEDIA
MOTOR	MOTEUR	MOTOR
NORMAL	NORMALE	NORMAL
PERMANENT PRESS	SYNTHETIQUES	PERMANENTE PRENSA
PREWASH	PRE LAVAGE	PRE COLADA

ENGLISH	FRENCH	SPANISH
RINSE	RINCAGE	ACLARACION
SOAK	IMBIBERT	REMOJAN
SPIN	ESSORAGE	VUELTA
SPRAY	CICLAGE	AEROSOL
WASH	LAVAGE	COLADA
TIMED FILL	SYNCHRONISES REMPLISSAGE	SYNCRONIZADO TERRAPLEN



NOTE:
NOT AVAILABLE ALL MODELS.
KEY
[] CONTACT OPEN ON CHART
[] CONTACT CLOSED ON CHART



INTERMITTENT AGITATE PROGRAM

LEGEND / LEGENDE / LEYENDA

- TIMER SWITCH
INT. DU PROGRAMMEUR
INTERRUPTOR DEL TEMPORIZADOR
- INT. COMP CONNECTION
CONNEXION INTERNE DE COMPOSANT
CONEXION INTERNO DEL COMPONENTE
- HARNESS WIRING
FAISCEAU DE FILS
CABLEADO DEL HARNESS
- HARNESS CONNECTION
CONNEXION DE FILS
CONEXION DEL HARNESS
- TERMINAL CONNECTION
CONNEXION DE LA BORNE
TERMINAL CONEXION

WASH RINSE / RINÇAGE DE LAVAGE
/ ACLARACION DE LA COLADA

DRIVE MOTOR / MOTEUR / IMPULSOR MOTOR

- L** LOW / LENT / BAJO
- M** MEDIUM / SUPPORT / MEDIA
- H** HIGH / HAUT / ALTO
- S** START / DEMARRENT / EMPIEZAN

HOT VALVE
SQUAPE D'EAU CHAUDE
CALIENTE VALVULA

COLD VALVE
SQUAPE D'EAU FROIDE
FRIA VALVULA

ATC SENSOR / CAPTEUR D'ATC / SENSOR DEL ATC

ATC BOARD / PANNEAU D'ATC / TARJETA DEL ATC

TSC TEMPERATURE SWITCH CHART
DIAGRAMME DE COMMUTEUR DE LA TEMPERATURE
CARTA DE INTERRUPTOR DE LA TEMPERATURA

- WATER LEVEL SWITCH
INTERRUPTEUR NIVEAU D'EAU
INTERRUPTOR DEL NIVEL DEL AGUA
- FULL / PLEIN / POR COMPLETO
- EMPTY / VIDE / VACIO
- LID SWITCH
INTERRUPTEUR DU COUVERCLE
INTERRUPTOR DE LA TAPA
- TIMER MOTOR
MOTEUR DE LA MINUTERIE
MOTOR DEL TEMPORIZADOR
- CENTRIFUGAL SWITCH
CONTACTEUR CENTRIFUGE
CENTRIFUGO INTERRUPTOR

CABINET GROUND
TERRE DU CHASSI
CABIN MOLIDA

CAPACITOR /
CONDENSATEUR /
CONDENSADOR

FUSE / FUSIBLE /
FUSIBLE

BUZZER / VIBREUR /
SEÑAL SONORA

BLEACH DISPENSE CIRCUIT
NOT USED ALL MODELS

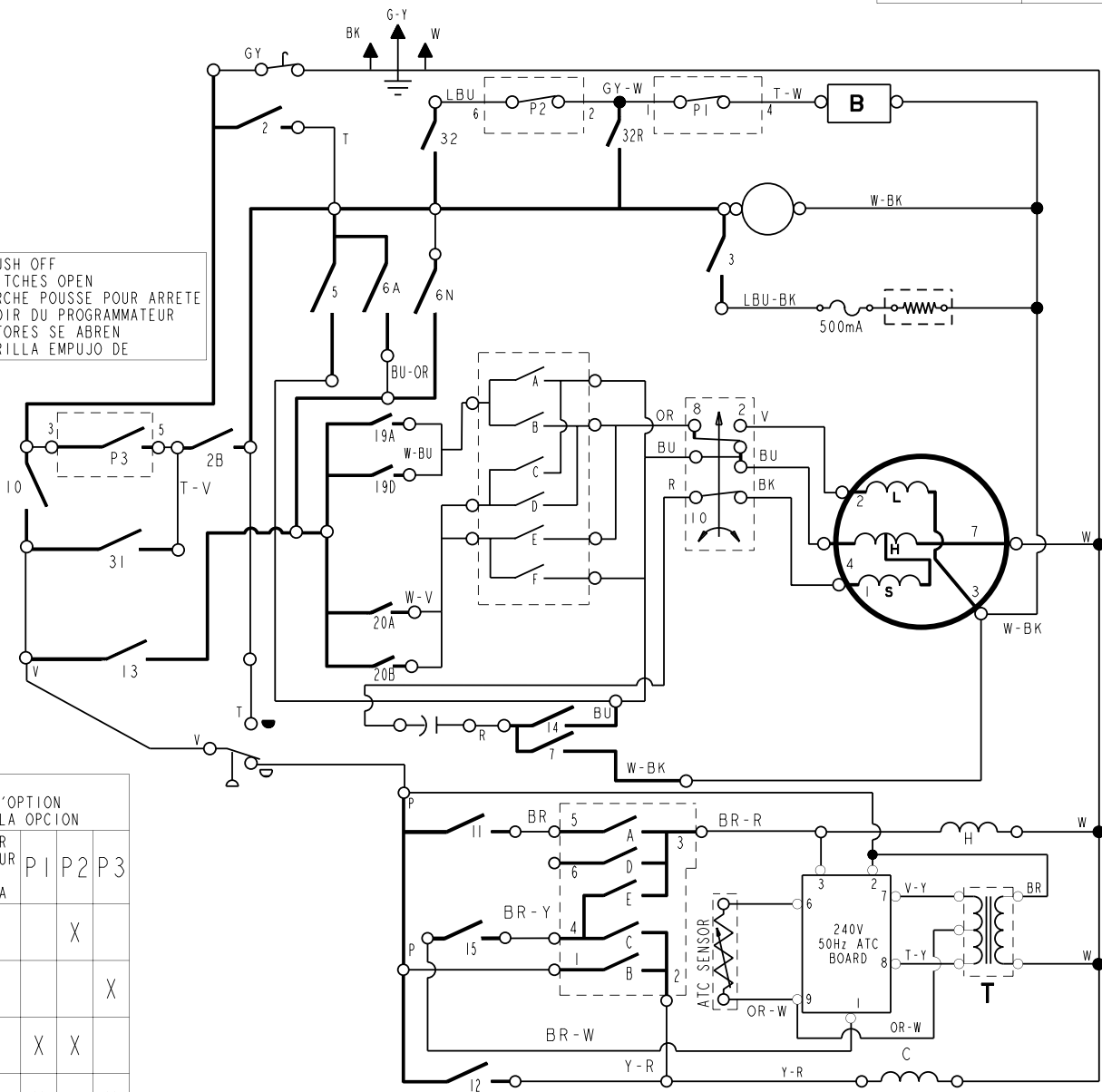
L'AGENT DE BLANCHIMENT
DISTRIBUE LE CIRUIT
NON UTILISE TOUS LES
MODELS

EL BLANQUEO DISPENSA EL
CIRCUITO NO USADO
TODOS LOS MODELOS

TIMER KNOB PUSH OFF
ALL TIMER SWITCHES OPEN
TIRE POUR MARCHE PUSSE POUR ARRETE
BOUTON-FOUSSOIR DU PROGRAMMEUR
LOS INTERRUPTORES SE ABREN
CUANDO LA PERILLA EMPUJO DE

230V 60Hz

PART NO. NUMERO DE PIECE NUMERO DE PIEZA	REV REVISION REVISION
W10117059	B



MANUFACTURED UNDER ONE OR MORE OF THE FOLLOWING US PATENTS:

4545947,	4555919,	4566295,	4572596,	4618193,	4624117,	4643350
4646545,	4656844,	4656847,	4692987,	4693095,	4697293,	4700554,
4709951,	4715401,	4719769,	4754622,	4759202,	4774822,	4779431,
4782544,	4784666,	4785643,	4793820,	4807452,	4809524,	4835991,
4854559,	4856303,	4870988,	4888965,	4890465,	4891959,	4910979,
4945735,	4947516,	4963341,	4972134,	4977394,	4986093,	4987627,
5000016,	5031427,	5033277,	5074003,	5075613,	5113542,	5130824,
5150588,	5154071,	5166568,	5167722,	5172573,	5177659,	5191667,
5191668,	5191669,	5193361,	5199127,	5199281,	5200684,	5205141,
5219370,	5233718,	5249441,	5255844,	5257901,	5259217,	5269160,
5271251,	5297403,	5305485,	5312138,	5314044,	5345637,	5345792,
5345793,	5359744,	5373715,	5460018,	5493745,	5504905,	5507053,
5515565,	5582039,	5582199,	5600018,	5617494,	5765404,	5784902,
5791167,	5836180,	5852942,	5875655,	5878602,	5883490,	5946946,
6065171,	6070282,	6105403,	6115863,	6125490,	6185774,	6212722,
6227013,	6227014,	6269666,	6347645,	6363563,	6393872,	6430971,
6505370,	6597144,	6604298,	6685241,	6732447,	6784673,	6819255,
6840968,	6846790,	6860032,	6863197,	6900166,	6964360,	6966204,
6937400,	6973515,	7020985,	7080464,	7097667,	7314263,	7375390,
7381140,	7423740,	7426686,	7456572,	7459844,	7463631,	7465308,
7474566,	7495453,	7518250,	7502577,	7514756,	7521196,	7523595,
7524001,	7527853,					

MANUFACTURED UNDER ONE OR MORE OF THE FOLLOWING CANADIAN PATENTS:

FABRIQUE SOUS UN OU PLUSIEURS DES BREVETS CANADIENS SUIVANTS:

1228410,	1233039,	1233658,	1282557,
1287338,	1288966,	1298988,	1301469,
1306367,	1313770,	2018915,	2022266,
2043393,	2056969,	2086151,	076618

MANUFACTURADO BAJO UNA O MAS DE LAS SIGUIENTES PATENTES MEXICANAS:

159840,	159983,	161744,	163722,	164305,	164407,
165938,	165992,	170221,	174138,	174478,	174483,
177784,	177766,	181185,	182183,	182396,	182632,
187728,	189682,	189766,	192502,	192503,	198393,
199844,	205519,	211042,			

OPTION SWITCH CHART
DIAGRAMME DE COMMUTEUR D'OPTION
CARTA DEL INTERRUPTOR DE LA OPCION

EXTRA RINSE SUPPLEMENTAIR ADICIONAL ACLARACION	BUZZER VIBREUR SEÑAL SONORA	P1	P2	P3
1 OFF ARRET DE	OFF ARRET DE		X	
2 ON SUR EN	OFF ARRET DE			X
3 OFF ARRET DE	ON SUR EN	X	X	
4 ON SUR EN	ON SUR EN	X		X

POS	WASH RINSE	ATC TEMPS				
		A	B	C	D	E
1	HC	X				
2	CC		X			
3	WC	X	X		X	
4	#WC	X		X		
5	*CC		X			X

CYCLE	MOTOR SPEED					
	AGITATE	SPIN	A	B	C	D E F
DELICATE	LO	LO	X			X
CASUAL	LO	HI	X			X
NORMAL	HI	LO	X		X	
ULTRA CLEAN	HI	HI	X	X		