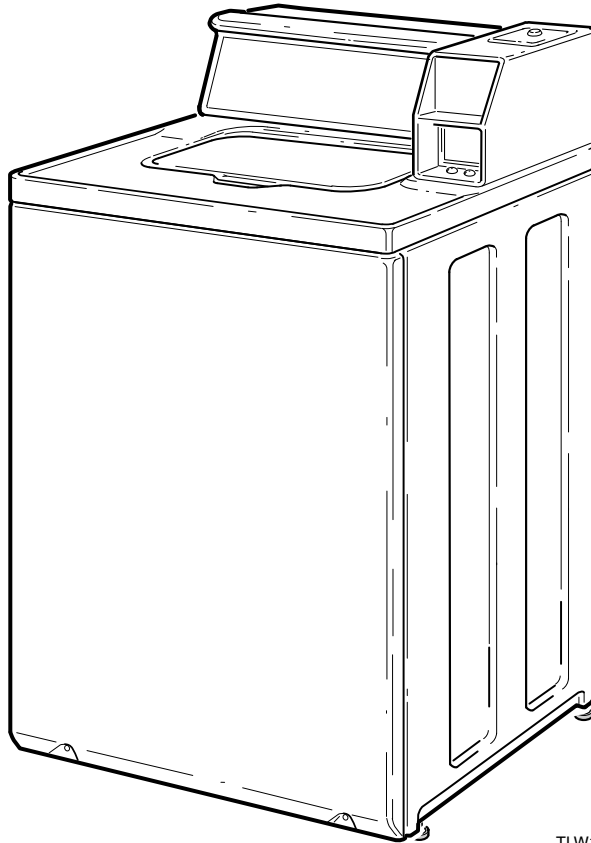


Commercial Topload Washers

Refer to Page 3 for Model Numbers



TLW13C_202201



Table of Contents

Title	Page
Parts Ordering Information.....	2
Serial Plate Location	2
Model Identification	3
Coin Drop, Meter Case and Service Door	4
Electronic Coin Drop	6
Control Panel, Control Hood and Controls (Drawing 1 of 4)	8
Control Panel, Control Hood and Controls (Drawing 2 of 4)	10
Control Panel, Control Hood and Controls (Drawing 3 of 4)	12
Control Panel, Control Hood and Controls (Drawing 4 of 4)	14
Control Hood Security Kit.....	16
Lid and Cabinet Top.....	18
Lid Switch.....	20
Fill Hose, Mixing Valve-to-Tub Cover Hose, Mixing Valve and Bracket.....	22
Motor, Mounting Bracket, Belt, Pump and Idler Assembly (Drawing 1 of 2)	24
Motor, Mounting Bracket, Belt, Pump and Idler Assembly (Drawing 2 of 2)	26
Agitator, Drive Bell, Hub and Lip Seal Kit and Washtub	28
Outer Tub, Cover, Bearing and Seal Housing, Pressure Hose and Counterweight.....	30
Transmission Assembly	32
Drain Hoses and Siphon Break Kit	34
Weldment and Bearing Assembly, Brake and Pulley.....	36
Front Panel, Base Assembly and Cabinet Kit	38
Mixing Valve and Motor Disconnect Blocks, Terminals and Terminal Extractor Tool	40
Lead-In Cord	42
Terminals	44
Shipping Materials and Special Tools	46
Special Tools	48
Wire Harnesses and Wires	50
Parts Index.....	53

© Copyright 2020, Alliance Laundry Systems LLC

All rights reserved. No part of the contents of this book may be reproduced or transmitted in any form or by any means without the expressed written consent of the publisher.

Parts Ordering Information

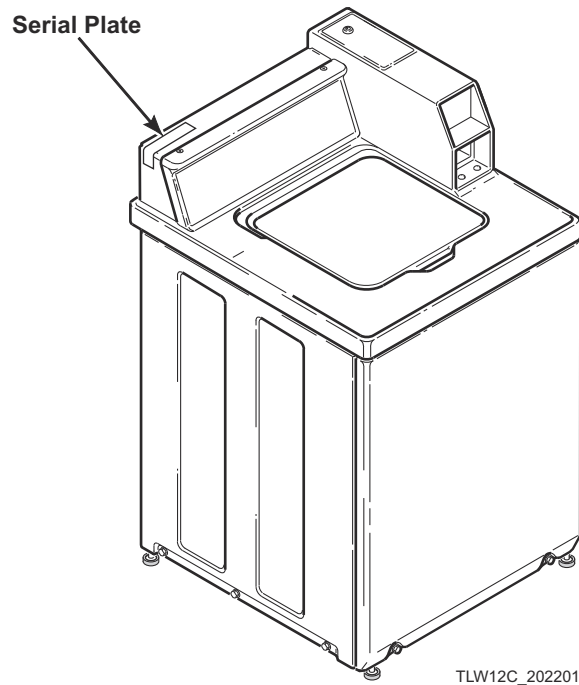
If literature or replacement parts are required, contact the source from whom the machine was purchased or contact Alliance Laundry Systems at (920) 748-3950 for the name and address of the nearest authorized parts distributor.

For technical assistance, call the number listed below:

(920) 748-3121 Ripon, Wisconsin

Serial Plate Location

When calling or writing about your product, be sure to mention model and serial numbers. Model and serial numbers are located on serial plate(s) as shown.



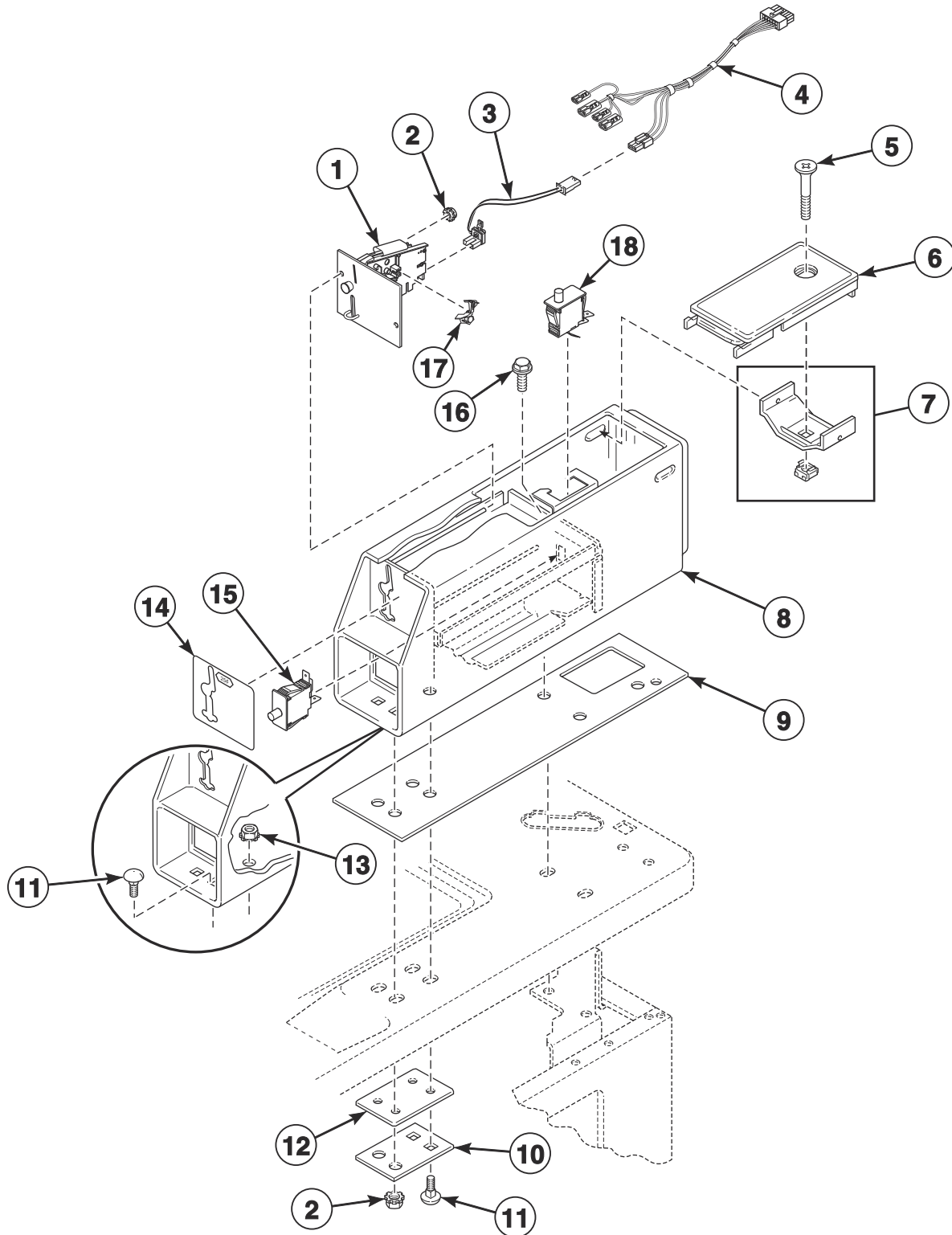
Model Identification

Information in this manual is applicable to these washer models:

HWNLX2SP111CW01	SWNLC2PP111TW01
HWNLE2SP111CW01	SWNLC2PP111TW02
HWNLE2SP111CWNA	SWNLC2PP111TWNA
HWNLY2SP111CW01	SWNLC2SP111TQ01
	SWNLC2SP111TW01
	SWNLC2SP111TW02
	SWNLC2SP111TWNA
	SWNLX2PP111TW02
	SWNLX2SP111TW01
	SWNLX2SP111TW02
	SWNLX2SP301AW01
	SWNLY2PP111TW01
	SWNLY2PP111TWNA
	SWNLY2SP111TW01
	SWNLY2SP111TWNA
	SWNLY2SP301NW22

Coin Drop, Meter Case and Service Door

Models HWNLX2SP111CW01, HWNLE2SP111CW01, HWNLE2SP111CWNA, SWNLC2PP111TW01, SWNLC2PP111TW02, SWNLC2PP111TWNA, SWNLC2SP111TQ01, SWNLC2SP111TW01, SWNLC2SP111TW02, SWNLC2SP111TWNA, SWNLX2PP111TW02, SWNLX2SP111TW01, SWNLX2SP111TW02 and SWNLX2SP301AW01



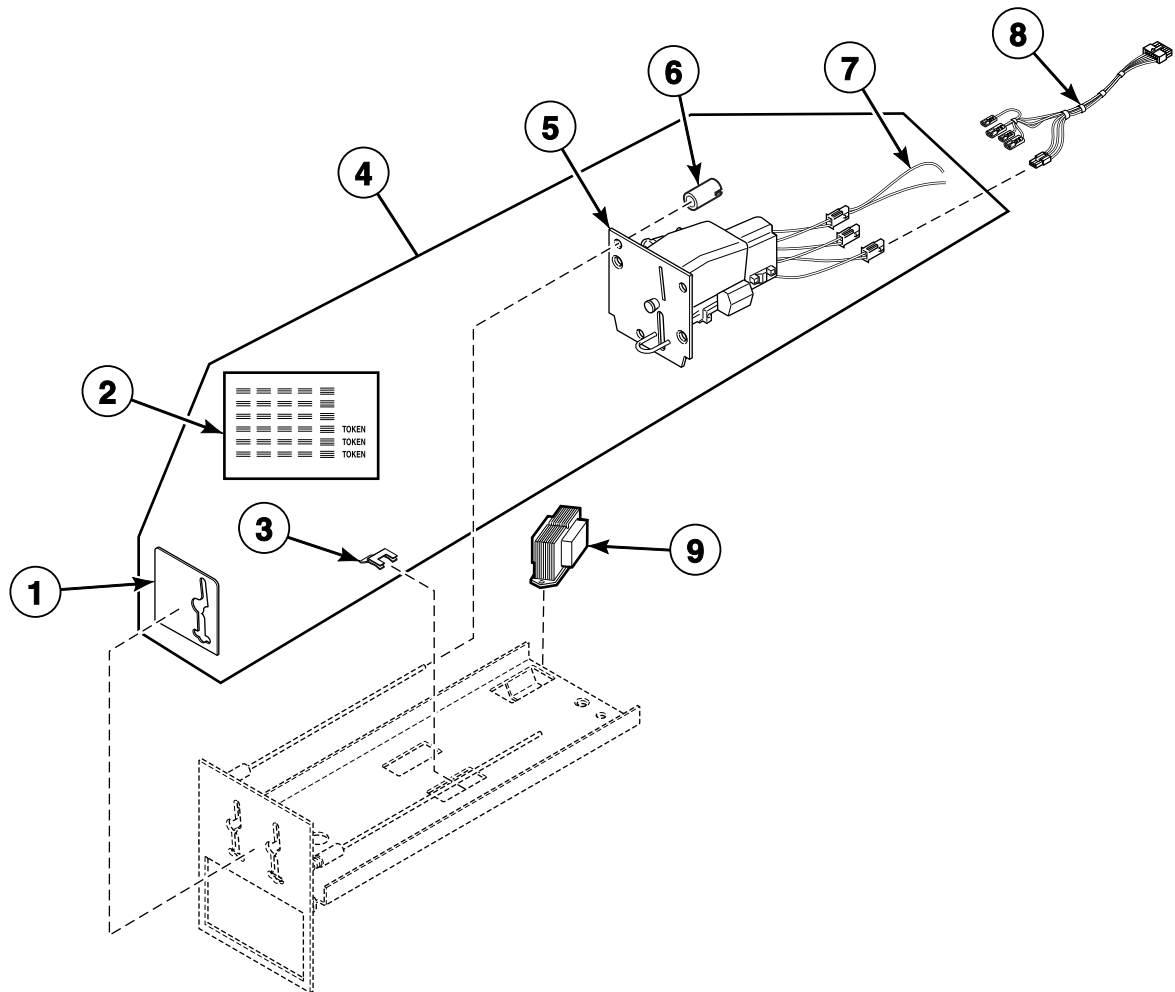
TLW1621P_202201

Coin Drop, Meter Case and Service Door

REF	PART NO.	DESCRIPTION	COMMENTS
1	70441601P	Coin Drop	Single; U.S.A. \$.25
	38464P	Coin Drop Assembly	Single; Canada .25
	70441602	Coin Drop Assembly	Dual; Canada .25 and 1.00
	38467	Coin Drop Assembly	Dual; Australia .20 and 1.00
	70447301	Coin Drop Assembly	Dual; Australia 1.00 and 2.00
	70482401	Coin Drop Assembly	Dual; New Zealand 1.00 and 2.00
	38462P	Coin Drop Assembly	Token 118-1; .880 diameter x .079 thick; Brass
	38463	Coin Drop Assembly	Token 118-5; .990 diameter x .081 thick; Silver
	38963P	Coin Drop	Token 118-16 not available; Replacement for 38963P Coin Drop only
2	29786	Nut	
3	200674P	Opto Coupler	
4	802905	Harness Assembly	Dual coin; Models HWNLX2SP111CW01, HWNLE2SP111CW01, HWNLE2SP111CWNA, SWNLX2PP111TW02, SWNLX2SP111TW01, SWNLX2SP111TW02 and SWNLX2SP301AW01
	802904P	Harness Assembly	All other models
5	D503673	Screw	All models except SWNLC2PP111TW02, SWNLC2SP111TW02, SWNLX2PP111TW02 and SWNLX2SP111TW02 through Serial No. 1009027902
6	803043WP	Service Door Assembly	Models SWNLC2SP111TW02, SWNLX2PP111TW02 and SWNLX2SP111TW02 through Serial No. 1009027902
	39874QP	Service Door Assembly	Model SWNLC2SP111TQ01
	39874WP	Service Door Assembly	All other models
7	204616	Meter Case Locking Bracket Kit	All models except SWNLC2PP111TW02, SWNLC2SP111TW02, SWNLX2PP111TW02 and SWNLX2SP111TW02 through Serial No. 1009027902
8	807401W	Meter Case Assembly Kit	Models SWNLC2PP111TW02, SWNLC2SP111TW02, SWNLX2PP111TW02 and SWNLX2SP111TW02
	803578P	Coin Box Extension Kit	Use with 803063W Meter Case Assembly to extend shorter 7 inch coin boxes; Models SWNLC2PP111TW02, SWNLC2SP111TW02, SWNLX2PP111TW02 and SWNLX2SP111TW02 starting Serial No. 1009027903
	802505W	Meter Case Assembly	Models HWNLE2SP111CW01 and HWNLE2SP111CWNA
	202877Q	Meter Case Assembly	Model SWNLC2SP111TQ01
	202877W	Meter Case Assembly	All other models
9	26354	Meter Case Gasket	
10	35525	Meter Case Lockdown Bracket	
11	203798	Bolt	
12	35526	Meter Case Bracket Gasket	
13	802337	Nut	
14	202123	Single Overlay	Models SWNLC2PP111TW02 and SWNLC2SP111TW02 through Serial No. 1009027902
	38717	Single Overlay	Models SWNLC2PP111TW02 and SWNLC2SP111TW02 starting Serial No. 1009027903; Models SWNLC2PP111TW01, SWNLC2PP111TWNA, SWNLC2SP111TQ01, SWNLC2SP111TW01 and SWNLC2SP111TWNA
15	D512973	Switch	Used through Serial No. 1810000001
	70529301	Switch	Used starting Serial No. 1810000001
16	36048	Screw	
17	201595P	Wire Guard	Anti-stringing security device
18	D512973	Switch	Used through Serial No. 1810000001

Electronic Coin Drop

Models HWNLX2SP111CW01, HWNLE2SP111CW01, HWNLE2SP111CWNA, SWNLC2PP111TW01, SWNLC2PP111TW02, SWNLC2PP111TWNA, SWNLC2SP111TQ01, SWNLC2SP111TW01, SWNLC2SP111TW02, SWNLC2SP111TWNA, SWNLX2PP111TW02, SWNLX2SP111TW01, SWNLX2SP111TW02 and SWNLX2SP301AW01



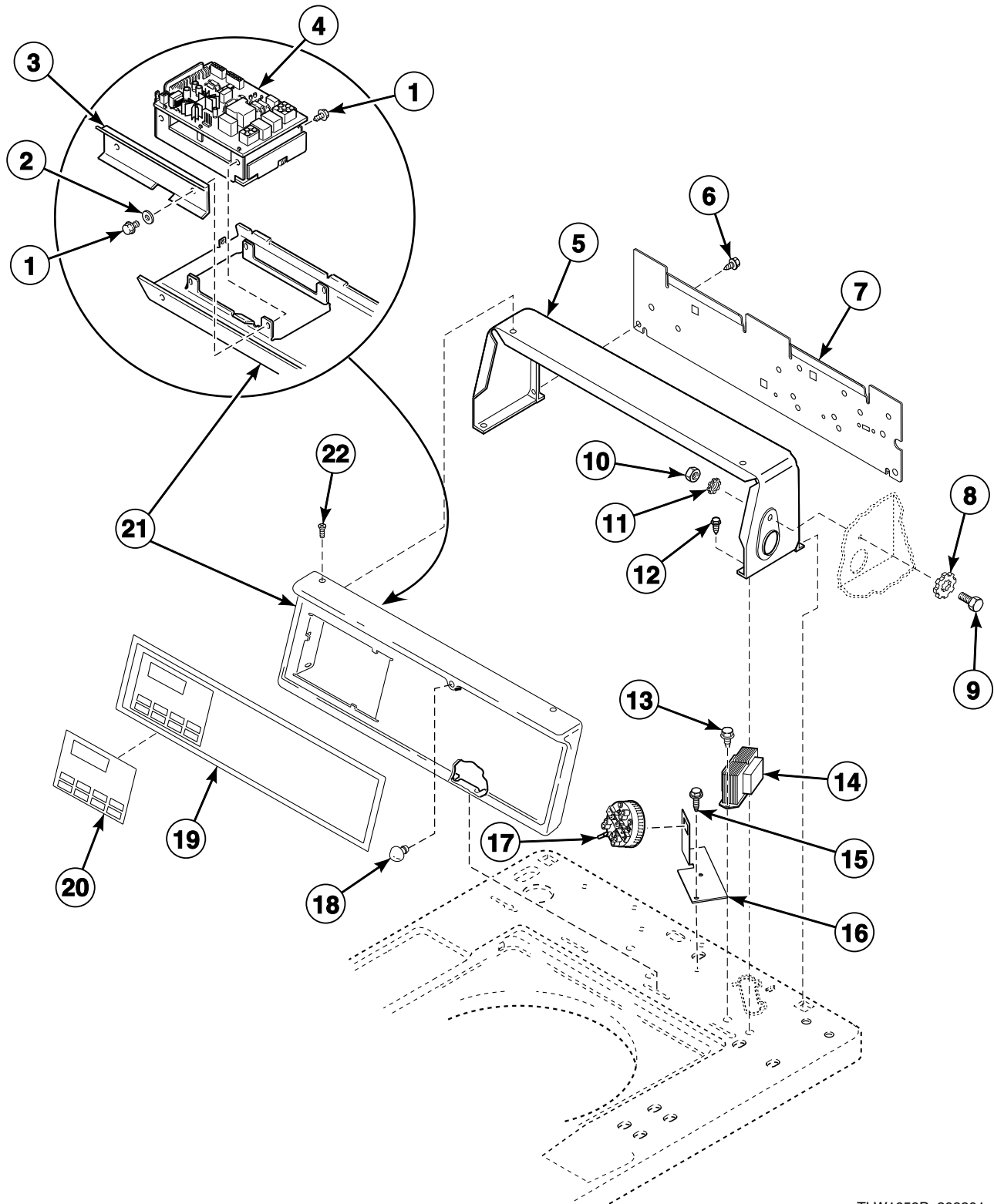
TLW1638P_202201

Electronic Coin Drop

REF	PART NO.	DESCRIPTION	COMMENTS
1	201091	Overlay	
2	38725	Coin Identification Paper	
3	201572	Clip	
4	CK115	Electronic Coin Drop Kit	Includes items 1-3 and 5-7; United States and Canada coins; Models SWNLC2PP111TW01, SWNLC2PP111TW02, SWNLC2PP111TWNA, SWNLC2SP111TQ01, SWNLC2SP111TW01, SWNLC2SP111TW02 and SWNLC2SP111TWNA also order items 8 and 9
	CK099	Electronic Coin Drop Kit	Includes items 1-3 and 5-7; Australia, New Zealand, Hong Kong and South Korea coins
	CK100	Electronic Coin Drop Kit	Includes items 1-3 and 5-7; Euro and Great Britain coins
	CK101	Electronic Coin Drop Kit	Includes items 1-3 and 5-7; Euro, Denmark and Norway coins
	CK103	Electronic Coin Drop Kit	Includes items 1-3 and 5-7; Euro, Lithuania and Latvia coins
	CK108	Electronic Coin Drop Kit	Includes items 1-3 and 5-7; South African 1, 2, 5 rand coins
	CK109	Electronic Coin Drop Kit	Includes items 1-3 and 5-7; Euro coins
	CK110	Electronic Coin Drop Kit	Includes items 1-3 and 5-7; Mexico, Ecuador and United States coins
	CK113	Electronic Coin Drop Kit	Includes items 1-3 and 5-7; Japan and Taiwan coins
	CK116	Electronic Coin Drop Kit	Includes items 1-3 and 5-7; Malaysia and China coins
	CK117	Electronic Coin Drop Kit	Includes items 1-3 and 5-7; Russia coins
	CK118	Electronic Coin Drop Kit	Includes items 1-3 and 5-7; Philippine coins
	CK120	Electronic Coin Drop Kit	Includes items 1-3 and 5-7; Chile coins
	CK121	Electronic Coin Drop Kit	Includes items 1-3 and 5-7; Singapore coins
5	70294103P	Electronic Coin Drop Assembly	Euro and Great Britain coins
	70294104	Electronic Coin Drop Assembly	Euro, Denmark and Norway coins
	70294106	Electronic Coin Drop Assembly	Mexico, Ecuador and United States coins
	70294107	Electronic Coin Drop Assembly	Euro, Lithuania and Latvia coins
	70294110	Electronic Coin Drop Assembly	South African 1, 2, 5 rand coins
	70294111	Electronic Coin Drop Assembly	Euro coins
	70513311	Electronic Coin Drop Assembly	Malaysia and China coins
	70294117	Electronic Coin Drop Assembly	Russia coins
	70294120	Electronic Coin Drop Assembly	Chile coins
	70294121	Electronic Coin Drop Assembly	Singapore coins
6	201216	Nut	
7	201104	Coin Drop Wire Harness	
8	802905	Harness Assembly	Electronic coin drop requires this harness. If unit is not factory-equipped with this harness, it must be ordered separately.
9	201375P	Transformer	Electronic coin drop requires this transformer. If unit is not factory-equipped with this transformer, it must be ordered separately.

Control Panel, Control Hood and Controls (Drawing 1 of 4)

Models HWNLX2SP111CW01, HWNLE2SP111CW01, HWNLE2SP111CWNA, SWNLC2PP111TW01, SWNLC2PP111TW02, SWNLC2PP111TWNA, SWNLC2SP111TQ01, SWNLC2SP111TW01, SWNLC2SP111TW02, SWNLC2SP111TWNA, SWNLX2PP111TW02, SWNLX2SP111TW01 and SWNLX2SP111TW02



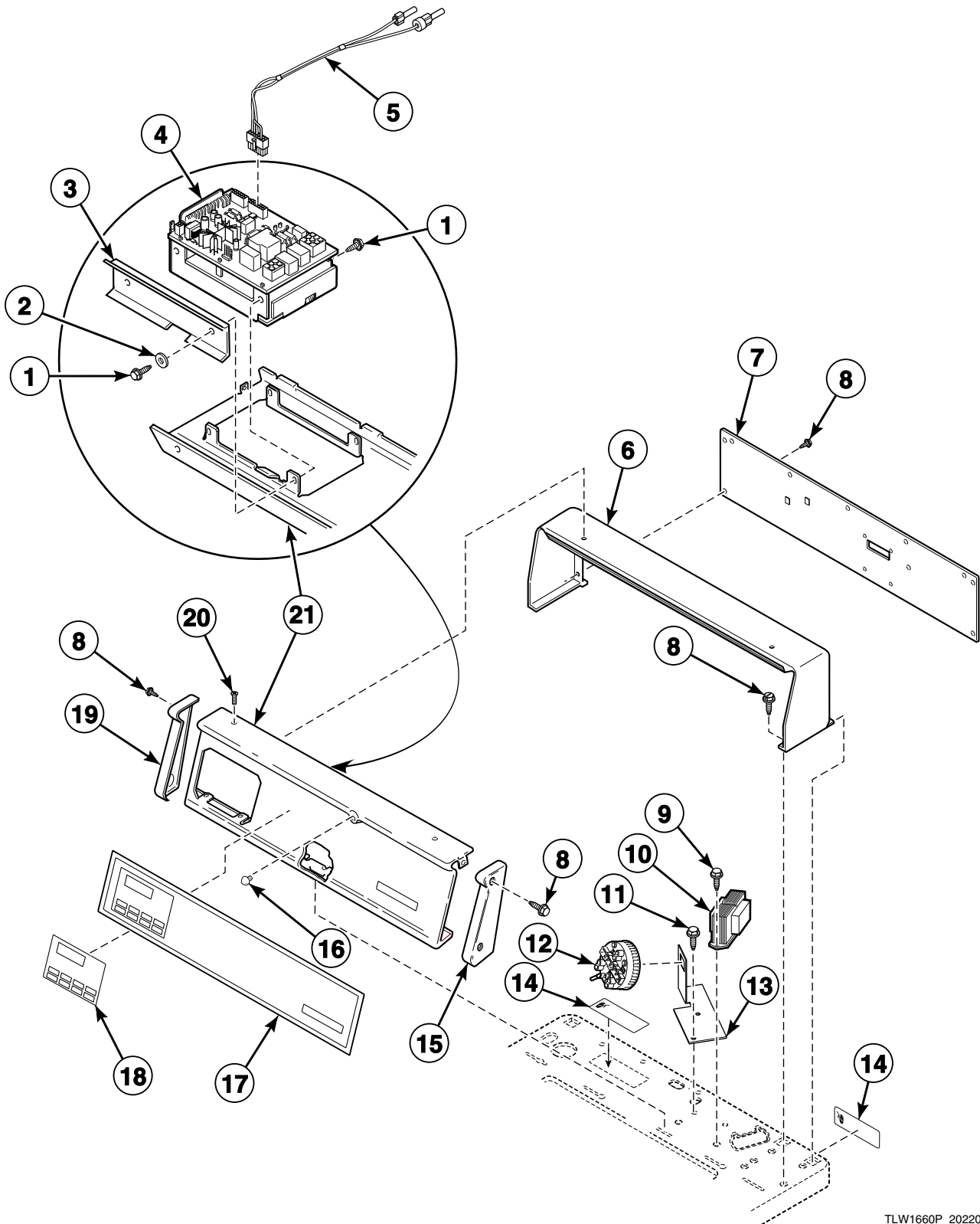
TLW1659P_202201

Control Panel, Control Hood and Controls (Drawing 1 of 4)

REF	PART NO.	DESCRIPTION	COMMENTS
	202331	Options Label	Models HWNLX2SP111CW01, HWNLE2SP111CW01 and HWNLE2SP111CWNA
	202332	Options Label	All other models
	NK201	Network Retrofit Kit	Wired
	NK301	Wireless Network Kit	
	NK220	Network Controller Kit	Wired
	NK320	Ethernet Gateway Kit	Wireless
	NK330	USB Gateway Kit	Wireless
1	D501524	Screw	
2	200608	Washer	
3	210053	Control Shield	
4	202311P	Control Assembly	
5	37075Q	Control Hood	Model SWNLC2SP111TQ01
	37075W	Control Hood	All other models
6	23222	Screw	
7	38267	Hood Back Panel	
8	M400017	Washer	
9	02916	Screw	
10	52566	Nut	
11	02431	Washer	
12	D501086	Screw	
13	D503661	Screw	
14	201375P	Transformer	Some models may have jumper wire attached to transformer. Discard jumper wire when replacing transformer; Models HWNLX2SP111CW01, HWNLE2SP111CW01, HWNLE2SP111CWNA, SWNLX2PP111TW02, SWNLX2SP111TW01 and SWNLX2SP111TW02
	210018P	Transformer	All other models
15	23962	Screw	
16	201789	Pressure Switch Bracket	
17	201997P	Pressure Switch	Models through Serial No. 1110007358
	803638P	Pressure Switch	Models starting Serial No. 1110007359
	803637	Pressure Switch	Use for higher water level on models through Serial No. 1110007358
18	202469	Control Panel Bumper	
	M400795	Bumper	Extra thick
19	202417	Control Overlay	Models HWNLX2SP111CW01, HWNLE2SP111CW01 and HWNLE2SP111CWNA
	202416	Control Panel Overlay	All other models
20	202309	Control Sticker Overlay	French/English; Models HWNLX2SP111CW01, HWNLE2SP111CW01 and HWNLE2SP111CWNA
21	210042Q	Control Panel Assembly	Model SWNLC2SP111TQ01
	210042W	Control Panel Assembly	All other models
22	52864	Screw	Phillips head
	35528	Screw	Torx head

Control Panel, Control Hood and Controls (Drawing 2 of 4)

Models HWNLY2SP111CW01, SWNLY2PP111TW01, SWNLY2PP111TWNA,
SWNLY2SP111TW01 and SWNLY2SP111TWNA



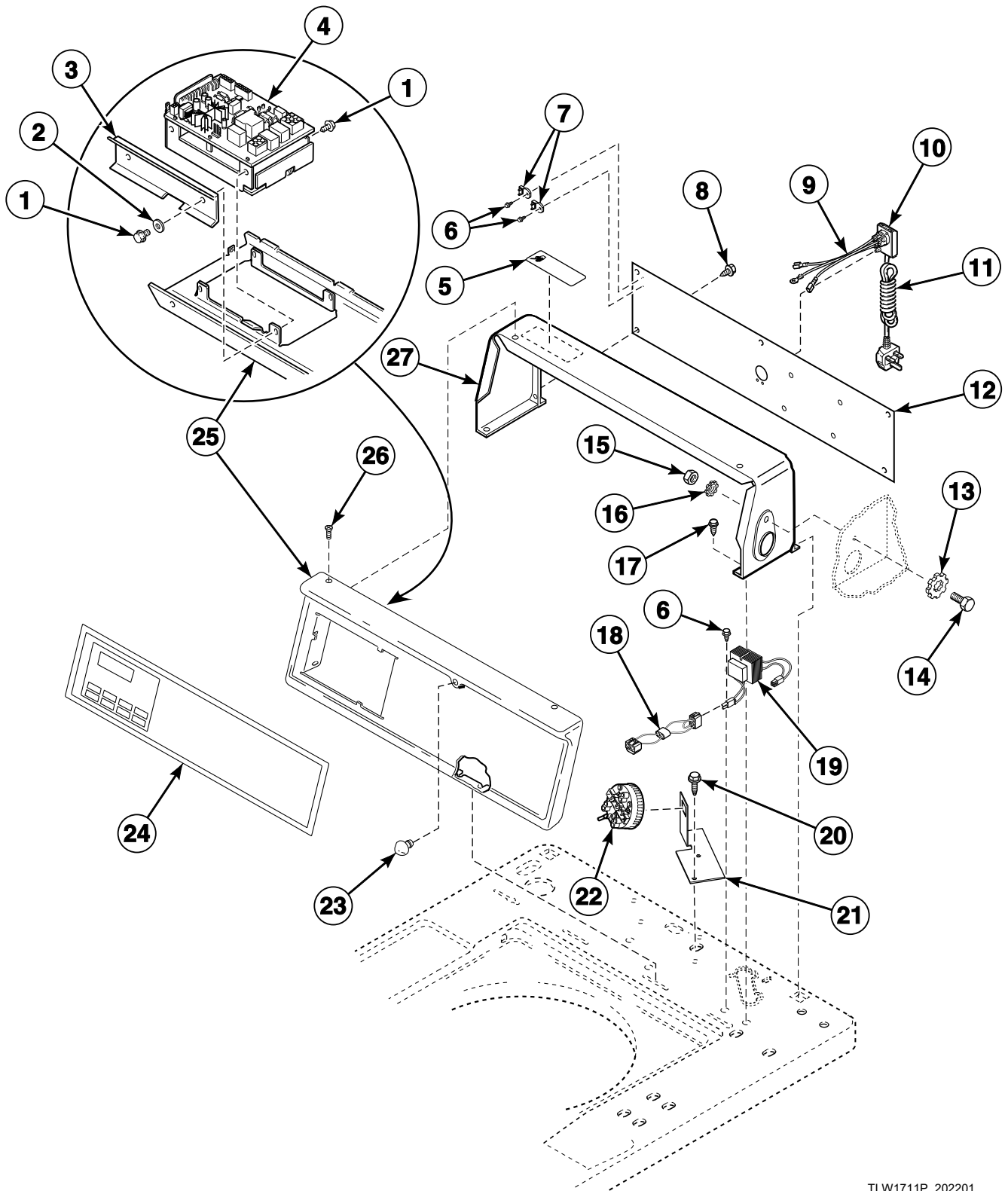
TLW1660P_202201

Control Panel, Control Hood and Controls (Drawing 2 of 4)

REF	PART NO.	DESCRIPTION	COMMENTS
	202331	Options Label	Model HWNLY2SP111CW01
	202332	Options Label	All other models
	NK201	Network Retrofit Kit	Wired
	NK301	Wireless Network Kit	
	NK220	Network Controller Kit	Wired
	NK320	Ethernet Gateway Kit	Wireless
	NK330	USB Gateway Kit	Wireless
1	D501524	Screw	
2	200608	Washer	
3	210053	Control Shield	
4	202311P	Control Assembly	
5	800680	Diagnostic Wire Harness Assembly	
6	210142W	Control Hood	
7	210143	Rear Panel	
8	D501086	Screw	
9	D503661	Screw	
10	201375P	Transformer	Some models may have jumper wire attached to transformer. Discard jumper wire when replacing transformer.
11	23962	Screw	
12	201997P	Pressure Switch	Models through Serial No. 1110007358
	803638P	Pressure Switch	Models starting Serial No. 1110007359
	803637	Pressure Switch	Use for higher water level on models through Serial No. 1110007358
13	201789	Pressure Switch Bracket	
14	D500316	Warning Label	Model HWNLY2SP111CW01
	D505281	Disconnect Power Warning Label	All other models
15	210108W	End Cap	Right
16	202469	Control Panel Bumper	
	M400795	Bumper	Extra thick
17	202418	Control Overlay	Model HWNLY2SP111CW01
	202415	Control Overlay	All other models
18	202309	Control Sticker Overlay	French/English; Model HWNLY2SP111CW01
19	210109W	End Cap	Left
20	52864	Screw	
21	210137W	Control Panel Assembly	

Control Panel, Control Hood and Controls (Drawing 3 of 4)

Model SWNLX2SP301AW01



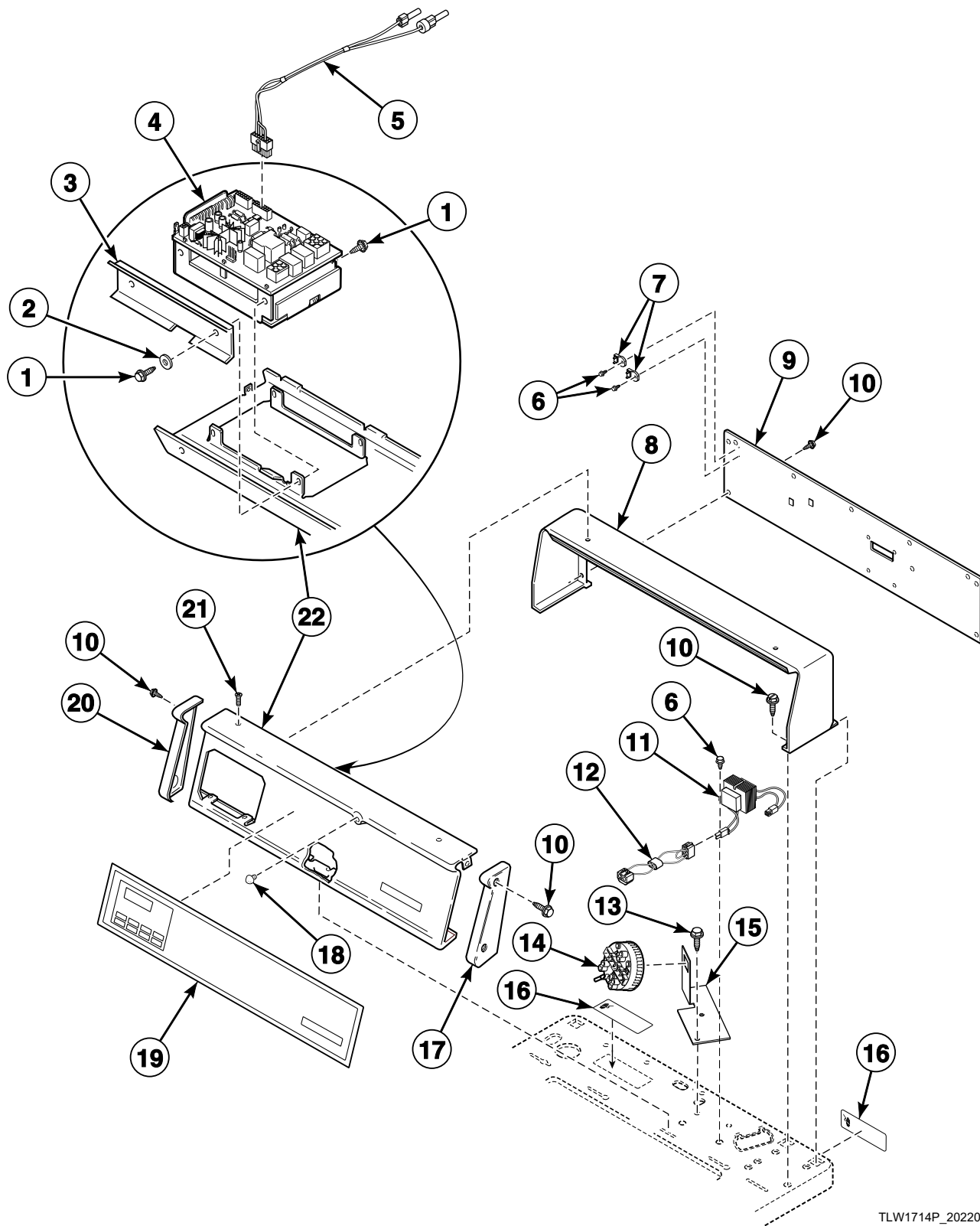
TLW1711P_202201

Control Panel, Control Hood and Controls (Drawing 3 of 4)

REF	PART NO.	DESCRIPTION	COMMENTS
	202332	Options Label	
	NK201	Network Retrofit Kit	Wired
	NK301	Wireless Network Kit	
	NK220	Network Controller Kit	Wired
	NK320	Ethernet Gateway Kit	Wireless
	NK330	USB Gateway Kit	Wireless
1	D501524	Screw	
2	200608	Washer	
3	210053	Control Shield	
4	202311P	Control Assembly	
5	D511021	Shock Warning Label	
6	D503661	Screw	
7	210100	Resistor	
8	23222	Screw	
9	201405P	Lead-In Wire Harness Assembly	
10	39922	Cable Connection Box	
11	39931	Power Cord Assembly	
12	39920	Hood Back Panel	
13	M400017	Washer	
14	02916	Screw	
15	52566	Nut	
16	02431	Washer	
17	D501086	Screw	
18	M413507	Jumper Configuration Assembly	
19	803527P	Transformer	
20	23962	Screw	
21	201789	Pressure Switch Bracket	
22	803638P	Pressure Switch	
	803637	Pressure Switch	Use for higher water level on models through Serial No. 1110007358
23	202469	Control Panel Bumper	
	M400795	Bumper	Extra thick
24	202416	Control Panel Overlay	
25	210042W	Control Panel Assembly	
26	52864	Screw	Phillips head
	35528	Screw	Torx head
27	37075W	Control Hood	

Control Panel, Control Hood and Controls (Drawing 4 of 4)

Model SWNLY2SP301NW22



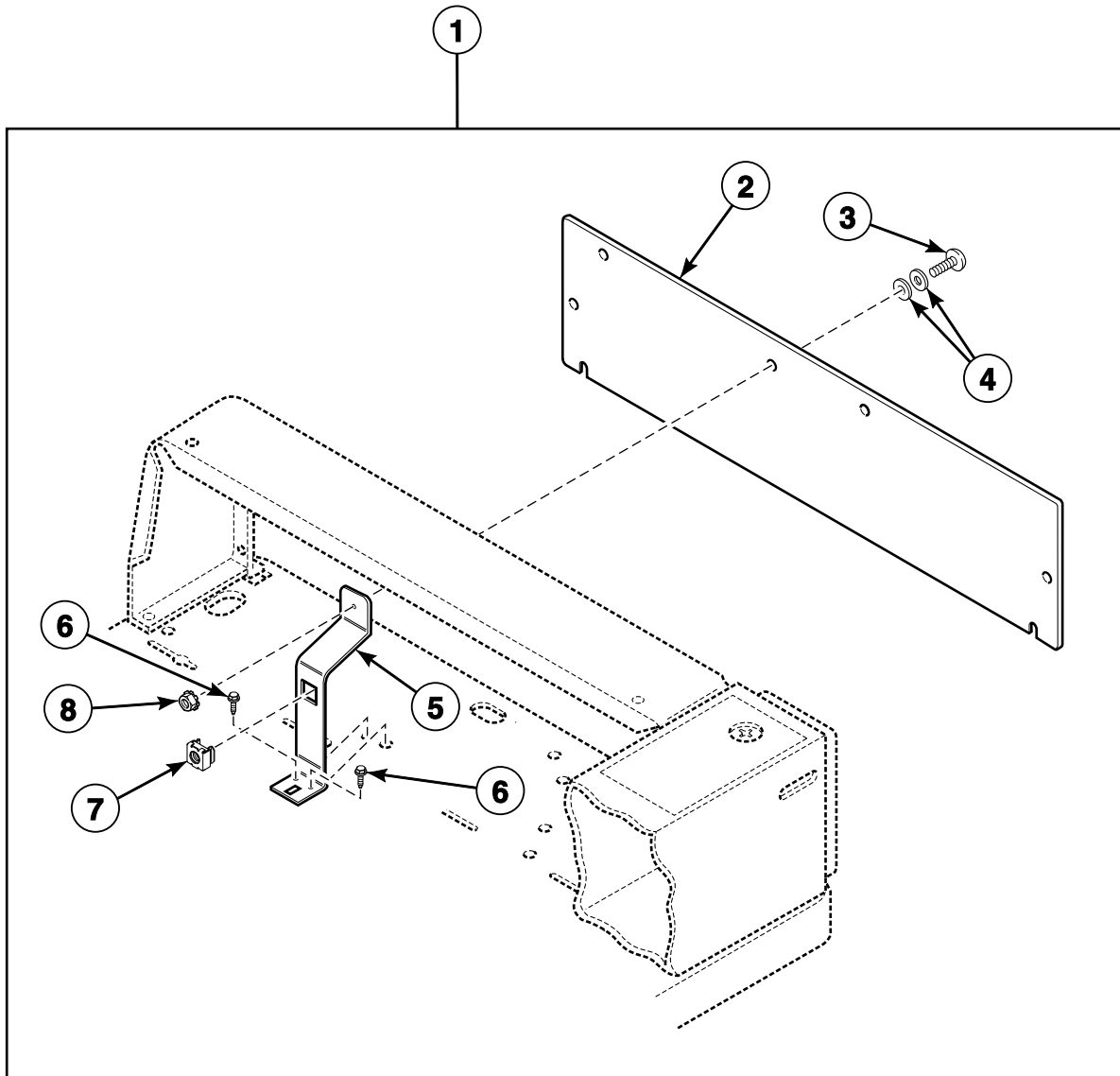
TLW1714P_202201

Control Panel, Control Hood and Controls (Drawing 4 of 4)

REF	PART NO.	DESCRIPTION	COMMENTS
	202332	Options Label	
	NK201	Network Retrofit Kit	Wired
	NK301	Wireless Network Kit	
	NK220	Network Controller Kit	Wired
	NK320	Ethernet Gateway Kit	Wireless
	NK330	USB Gateway Kit	Wireless
1	D501524	Screw	
2	200608	Washer	
3	210053	Control Shield	
4	202311P	Control Assembly	
5	800680	Diagnostic Wire Harness Assembly	
6	D503661	Screw	
7	210100	Resistor	
8	210142W	Control Hood	
9	210143	Rear Panel	
10	D501086	Screw	
11	803527P	Transformer	
12	M413507	Jumper Configuration Assembly	
13	23962	Screw	
14	803638P	Pressure Switch	
	803637	Pressure Switch	Use for higher water level on models through Serial No. 1110007358
15	201789	Pressure Switch Bracket	
16	D505281	Disconnect Power Warning Label	
17	210108W	End Cap	Right
18	202469	Control Panel Bumper	
	M400795	Bumper	Extra thick
19	202415	Control Overlay	
20	210109W	End Cap	Left
21	52864	Screw	
22	210137W	Control Panel Assembly	

Control Hood Security Kit

Models HWNLX2SP111CW01, HWNLE2SP111CW01, HWNLE2SP111CWNA, SWNLC2PP111TW01, SWNLC2PP111TW02, SWNLC2PP111TWNA, SWNLC2SP111TQ01, SWNLC2SP111TW01, SWNLC2SP111TW02, SWNLC2SP111TWNA, SWNLX2PP111TW02, SWNLX2SP111TW01, SWNLX2SP111TW02 and SWNLX2SP301AW01

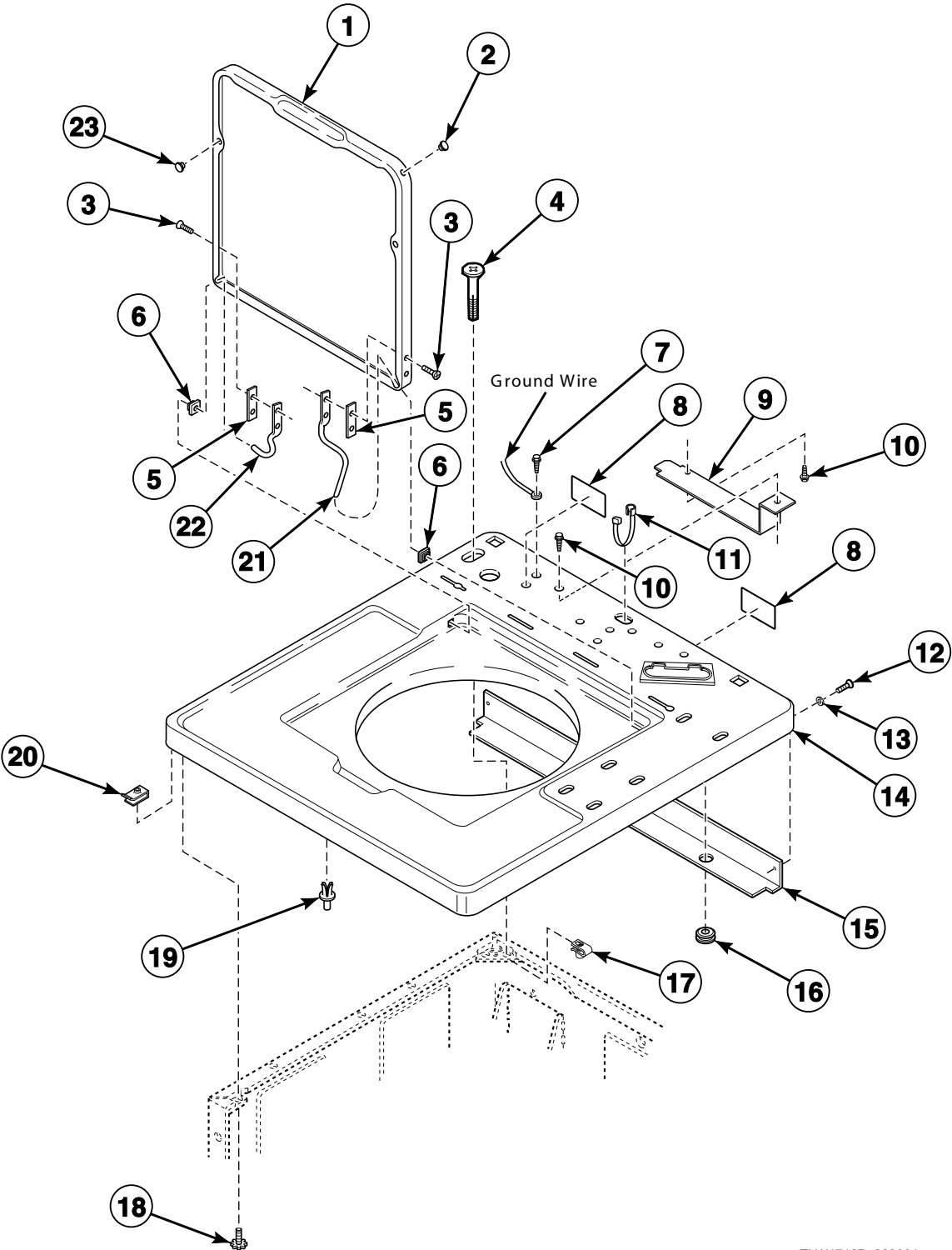


FLW963P_202201

Control Hood Security Kit

REF	PART NO.	DESCRIPTION	COMMENTS
1	904P3	Security Kit	Includes items 2-8
2	201919	Rear Panel	
3	32184	Bolt	
4	25100	Washer	
5	201918	Bracket	
6	D503688	Screw	
7	204616	Meter Case Locking Bracket Kit	
8	23951	Nut	

Lid and Cabinet Top

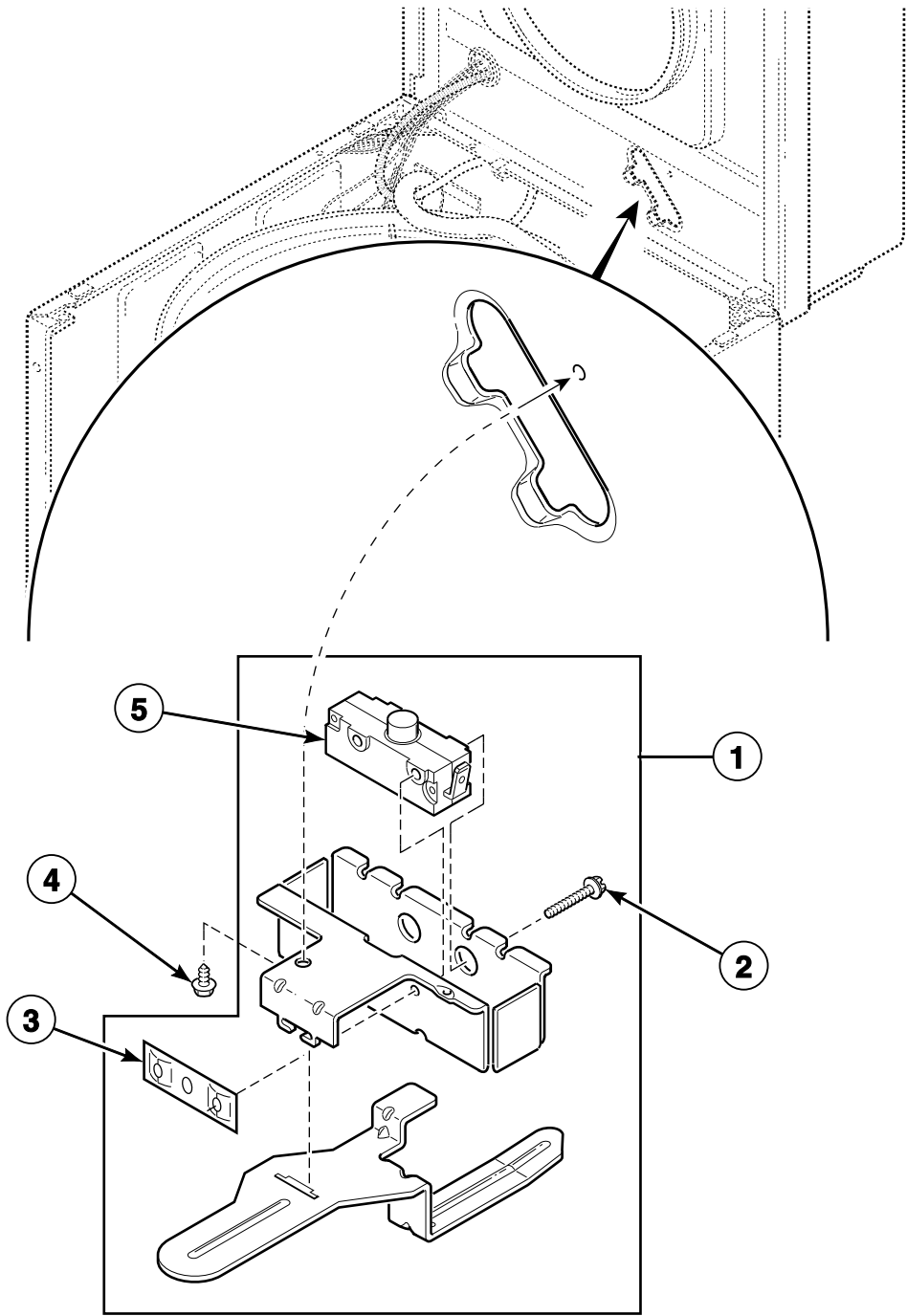


TLW1712P_202201

Lid and Cabinet Top

REF	PART NO.	DESCRIPTION	COMMENTS
1	201761WP	Lid	Models HWNLX2SP111CW01, HWNLE2SP111CW01, HWNLE2SP111CWNA and HWNLY2SP111CW01
	201460QP	Lid and Carton Assembly	Model SWNLC2SP111TQ01
	204615W	Lid	All other models
2	34153	Lid Plug	
3	34337	Screw	
4	D503673	Screw	Optional; For added security
5	34338	Hinge Gasket	
6	33446	Bushing	
7	52909	Screw	
8	D500316	Warning Label	Models HWNLX2SP111CW01, HWNLE2SP111CW01, HWNLE2SP111CWNA and HWNLY2SP111CW01
	D505281	Disconnect Power Warning Label	All other models
9	202083	Bracket	
10	23962	Screw	
11	38384	Strain Relief	
12	431287	Screw	Model SWNLX2SP301AW01
13	39249	Washer	Model SWNLX2SP301AW01
14	210173WP	Top Assembly	Models HWNLY2SP111CW01, SWNLY2PP111TW01, SWNLY2PP111TWNA, SWNLY2SP111TW01, SWNLY2SP111TWNA and SWNLY2SP301NW22
	39167QP	Top	Model SWNLC2SP111TQ01
	39167WP	Top	All other models
15	39744	Top Shield	Model SWNLX2SP301AW01
16	80262	Grommet	Model SWNLX2SP301AW01
17	27222	Nut	Optional; For added security
18	23008	Screw	
19	56534	Support Barrel	
20	36020	Nut	
21	36437	Lid Hinge	Right
22	36438	Lid Hinge	Left
23	21685	Bumper	

Lid Switch

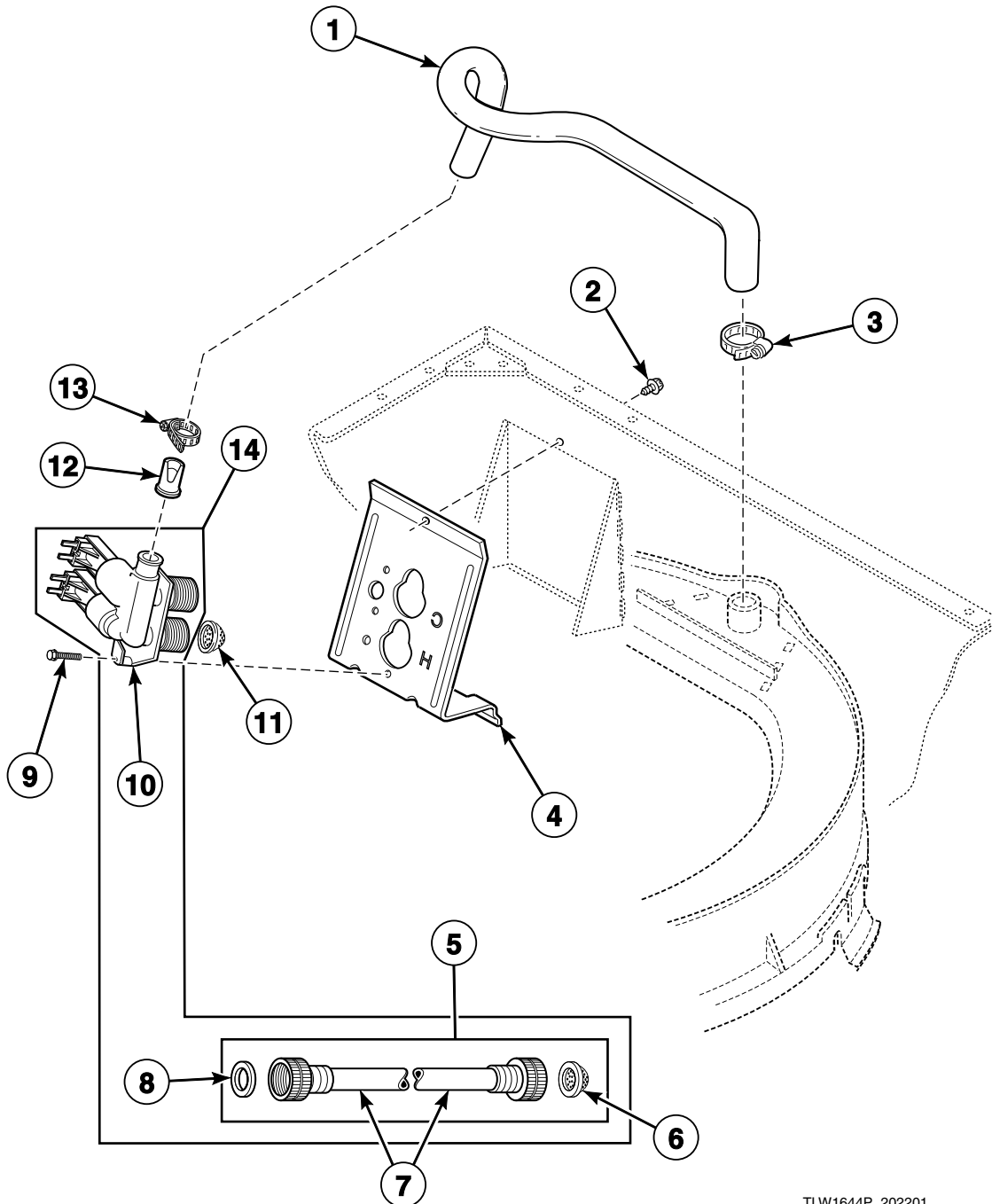


TLW1832B_202201

Lid Switch

REF	PART NO.	DESCRIPTION	COMMENTS
1	37631	Lid Switch Assembly	
2	M402574	Screw	
3	M400981	Nut	
4	23962	Screw	
5	33445	Switch	

Fill Hose, Mixing Valve-to-Tub Cover Hose, Mixing Valve and Bracket

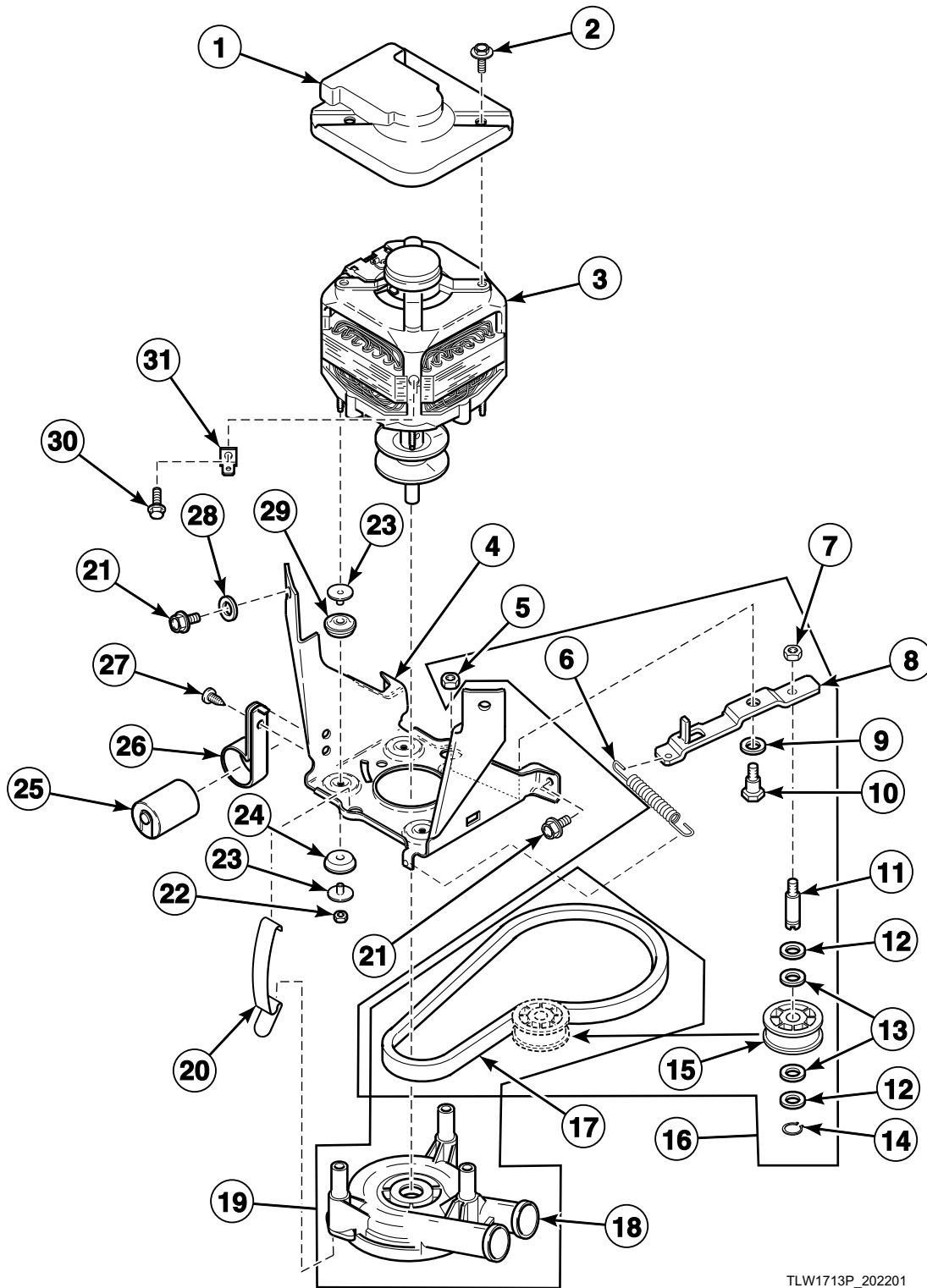


TLW1644P_202201

Fill Hose, Mixing Valve-to-Tub Cover Hose, Mixing Valve and Bracket

REF	PART NO.	DESCRIPTION	COMMENTS
1	38155	Mixing Valve-to-Tub Cover Hose	
2	33562	Screw	
3	800803	Hose Clamp	
4	39407	Mixing Valve Mounting Bracket	
5	F200116	Water Hose	5 feet; Hose is equipped with 2 standard hose couplings; Includes items 6 and 8
	38349P	Fill Hose Kit	5 feet; Hose is equipped with 1 metric and 1 standard hose coupling; Includes item 8
6	803615	Washer	Filter screen
	802254	Washer	Flow restrictor; Water pressure reducer; Available for water pressure up to but not exceeding 120 psi
7	20617	Fill Hose	8 feet; Hose is equipped with 2 standard hose couplings
	37380	Fill Hose	8 feet; Hose is equipped with 1 metric and 1 standard hose coupling
	20618	Fill Hose	10 feet; Hose is equipped with 2 standard hose couplings
	37381	Fill Hose	10 feet; Hose is equipped with 1 metric and 1 standard hose coupling
8	20290	Washer	
9	39397	Screw	
10	201468P	Mixing Valve	Models HWNLE2SP111CW01 and HWNLE2SP111CWNA
	39070P	Mixing Valve	Models SWNLX2SP301AW01 and SWNLY2SP301NW22
	201402P	Mixing Valve	All other models
11	24122	Mixing Valve Screen	
12	34500	Backflow Preventer	
13	36801	Hose Clamp	
14	RB150001	Mixing Valve Kit	Includes 201402P Mixing Valve and 2 of item 5

Motor, Mounting Bracket, Belt, Pump and Idler Assembly (Drawing 1 of 2)

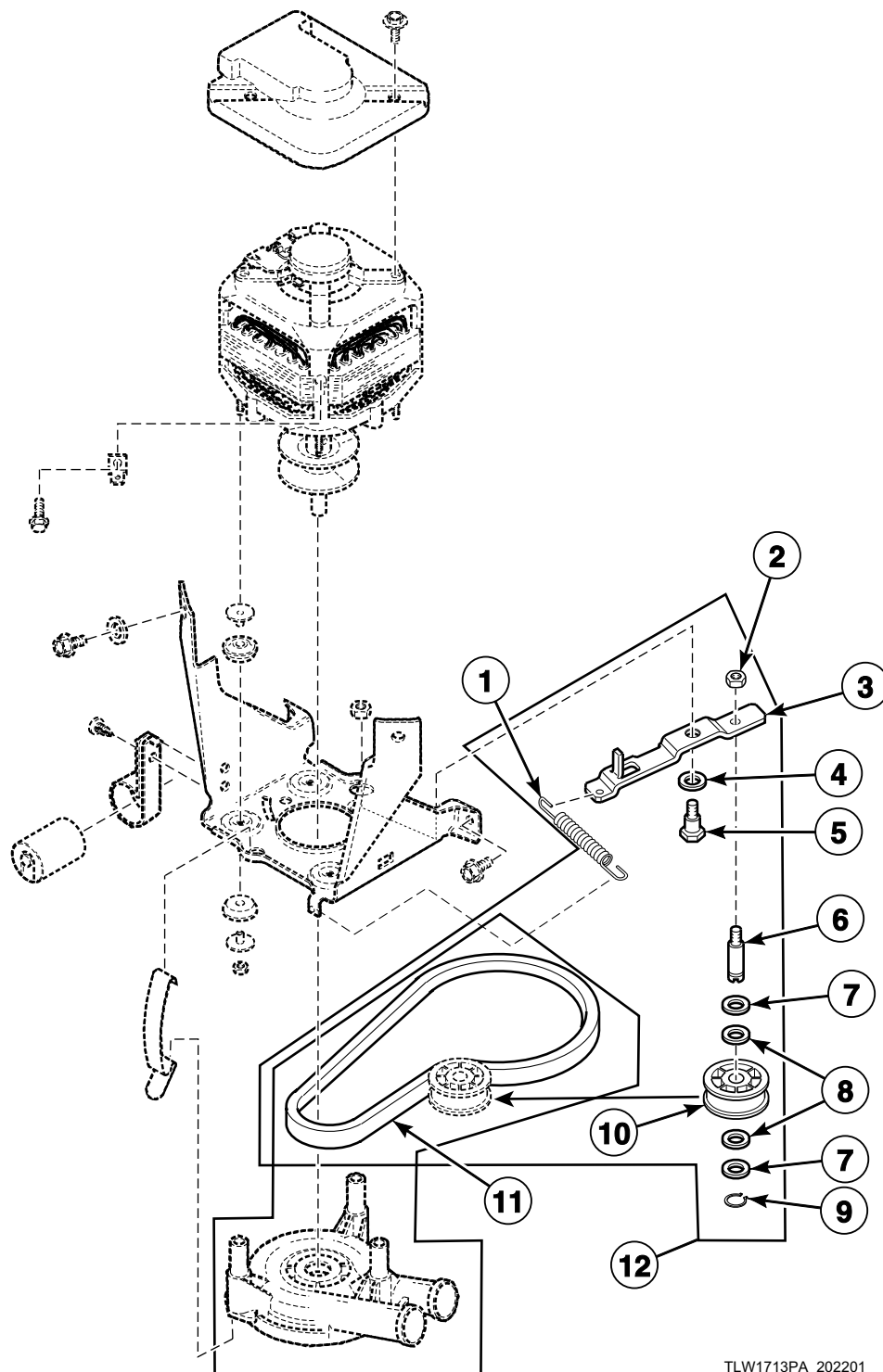


TLW1713P_202201

Motor, Mounting Bracket, Belt, Pump and Idler Assembly (Drawing 1 of 2)

REF	PART NO.	DESCRIPTION	COMMENTS
1	34754	Motor Shield	
2	36639	Screw	
3	201433P	Motor Kit	Models SWNLX2SP301AW01 and SWNLY2SP301NW22
	38034P	Motor Kit	All other models
4	200941	Motor Mount Bracket	
5	52566	Nut	
6	201189	Idler Lever Spring	
	202032	Idler Lever Spring	Use on units experiencing low RPM
7	28803	Nut	
8	38011	Idler Lever	
9	81392	Washer	
10	27229	Screw	
11	210186	Idler Shaft	
12	D504082	Washer	
13	52549	Washer	Nylatron
14	23748	Retaining Ring	
15	38225P	Idler Pulley	
16	959P3	Idler Lever Kit	Includes items 5-15 and 17
17	200923	Agitate and Spin Belt	Models SWNLX2SP301AW01 and SWNLY2SP301NW22
	38174	Agitate and Spin Belt	All other models
18	201566P	Pump	
	201442P	Pump Assembly	Heavy duty
19	RB150003	Belt and Pump Kit	Includes items 17 and 201566P Pump
20	210202	Spring Clip	
21	35369	Screw	
22	35423	Nut	
23	38325	Isolator Post	
24	204062	Isolator Assembly	
25	37377	Capacitor	All models except SWNLX2SP301AW01 and SWNLY2SP301NW22
26	37535	Capacitor Clamp	All models except SWNLX2SP301AW01 and SWNLY2SP301NW22
27	52909	Screw	All models except SWNLX2SP301AW01 and SWNLY2SP301NW22
28	37772	Washer	
29	204449	Motor Mount	
30	20530	Screw	Models SWNLX2SP301AW01 and SWNLY2SP301NW22
31	00177	Male Tab Terminal	Models SWNLX2SP301AW01 and SWNLY2SP301NW22

Motor, Mounting Bracket, Belt, Pump and Idler Assembly (Drawing 2 of 2)

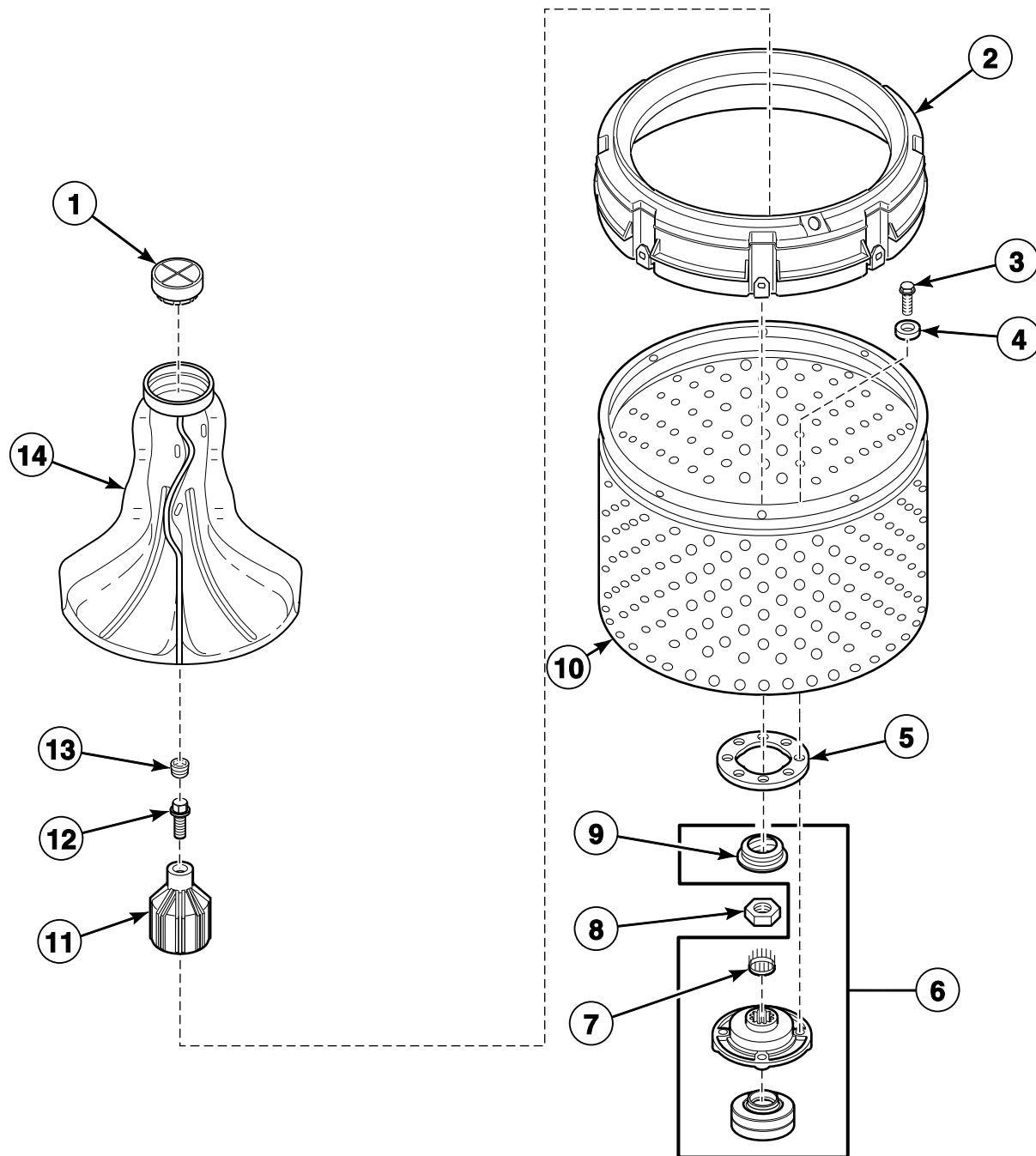


TLW1713PA_202201

Motor, Mounting Bracket, Belt, Pump and Idler Assembly (Drawing 2 of 2)

REF	PART NO.	DESCRIPTION	COMMENTS
1	201189	Idler Lever Spring	
	202032	Idler Lever Spring	Use on units experiencing low RPM
2	28803	Nut	
3	38011	Idler Lever	
4	81392	Washer	
5	27229	Screw	
6	210186	Idler Shaft	
7	D504082	Washer	
8	52549	Washer	Nylatron
9	23748	Retaining Ring	
10	38225P	Idler Pulley	
11	200923	Agitate and Spin Belt	Models SWNLX2SP301AW01 and SWNLY2SP301NW22
	38174	Agitate and Spin Belt	All other models
12	202972	Idler Lever and Belt Kit	Models SWNLX2SP301AW01 and SWNLY2SP301NW22

Agitator, Drive Bell, Hub and Lip Seal Kit and Washtub

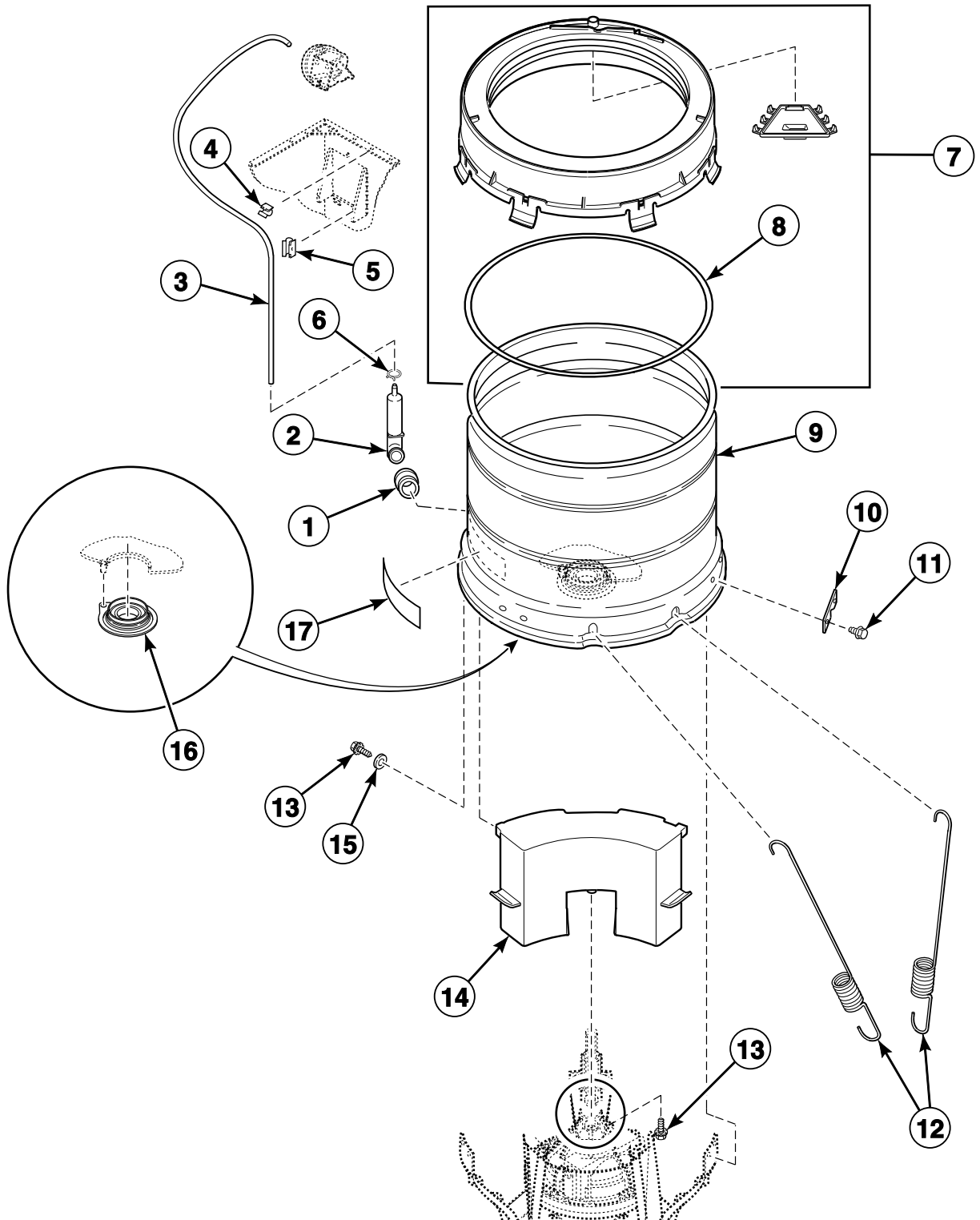


TLW1483P_202201

Agitator, Drive Bell, Hub and Lip Seal Kit and Washtub

REF	PART NO.	DESCRIPTION	COMMENTS
1	36515	Agitator Cap	
2	39836	Balance Ring Assembly	
3	27202	Screw	
4	28094	Washer	Rubber; Use with porcelain washtub
5	39122	Washtub Gasket	
6	766P3A	Hub and Lip Seal Kit	DO NOT use any sealant other than 200996P Sealant; Includes item 11 and installation tool
	200996P	Sealant	Use with hub and lip seal kit
7	29728	Spline Insert	
8	29220	Nut	
9	36425	Bell and Transmission Tube Seal	
	36765P	Grease	Use with bell and transmission tube seal
10	39250P	Tub Kit	Blue porcelain; Models SWNLC2PP111TW01, SWNLC2PP111TW02, SWNLC2PP111TWNA, SWNLX2PP111TW02, SWNLY2PP111TW01 and SWNLY2PP111TWNA
	719P3	Washtub Kit	Stainless steel; All other models
11	39508P	Drive Bell and Seal Kit	Includes items 9, 12 and 13
12	39432	Screw	
13	36511	Bell Plug	
14	33174	Agitator	

Outer Tub, Cover, Bearing and Seal Housing, Pressure Hose and Counterweight

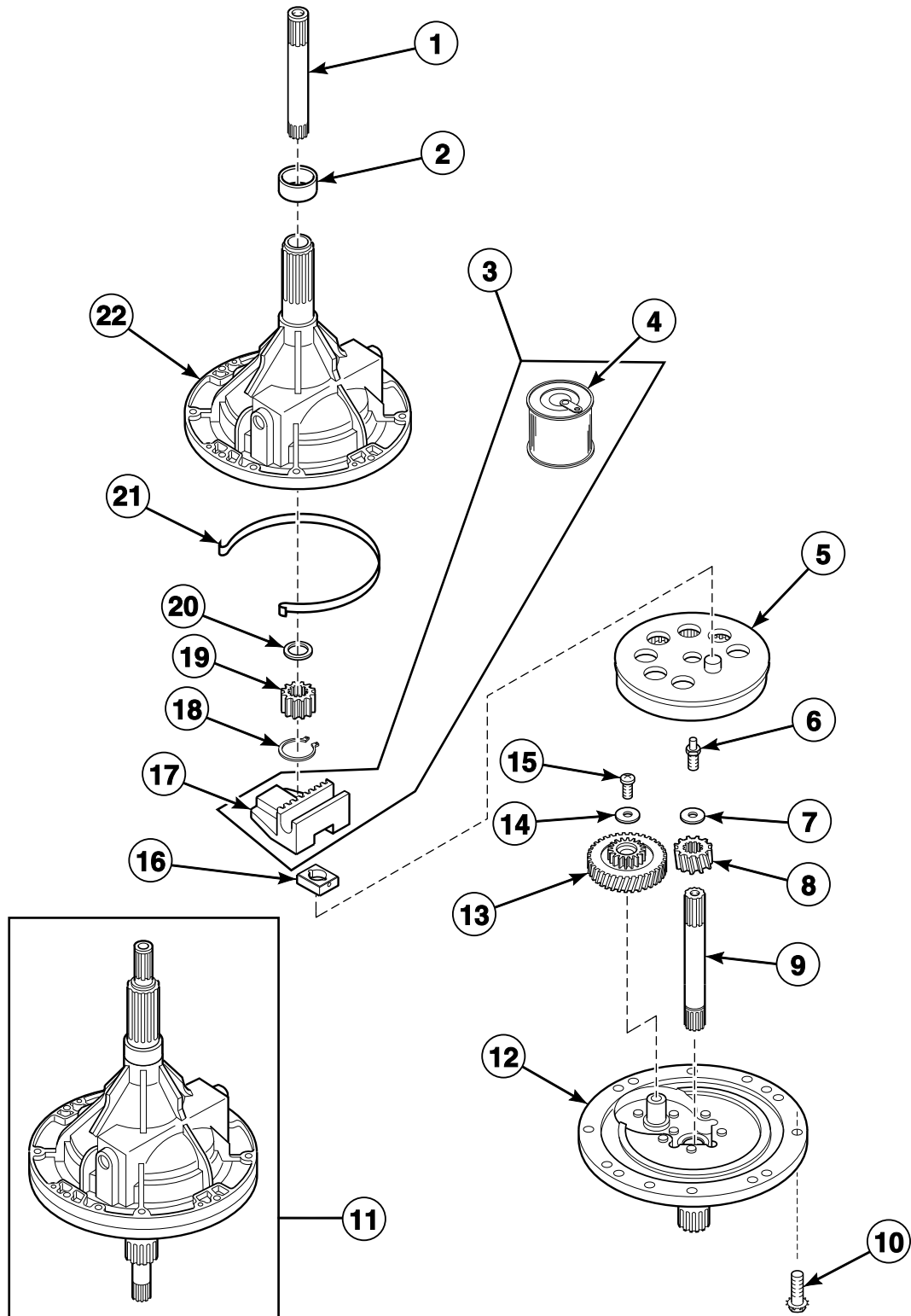


TLW1464P_202201

Outer Tub, Cover, Bearing and Seal Housing, Pressure Hose and Counterweight

REF	PART NO.	DESCRIPTION	COMMENTS
1	29175	Grommet	
2	30907	Pressure Bulb	
3	202700	Tubing	31 inch
4	21036	Cable Clip	
5	36985	Hose Clip	
6	39282	Hose Clamp	
7	38573	Tub Cover and Gasket Assembly	Includes item 8
8	38359	Tub Cover Gasket	
9	203603P	Outer Tub Assembly	
	636P3	Outer Tub Flange Kit	Use to replace outer tub flange due to flange damage or corrosion
10	27926	Leg Plate	
11	35369	Screw	
12	201521	Leg Spring	Marked with green paint. Use to replace the two rear springs closest to counterweight; Models SWNLX2SP301AW01 and SWNLY2SP301NW22
	37575	Leg Spring	
13	39566	Screw	
14	38769	Counterweight Assembly	
15	39249	Washer	
16	766P3A	Hub and Lip Seal Kit	
	200996P	Sealant	Use with hub and lip seal kit
17	D500049	Warning Label	

Transmission Assembly

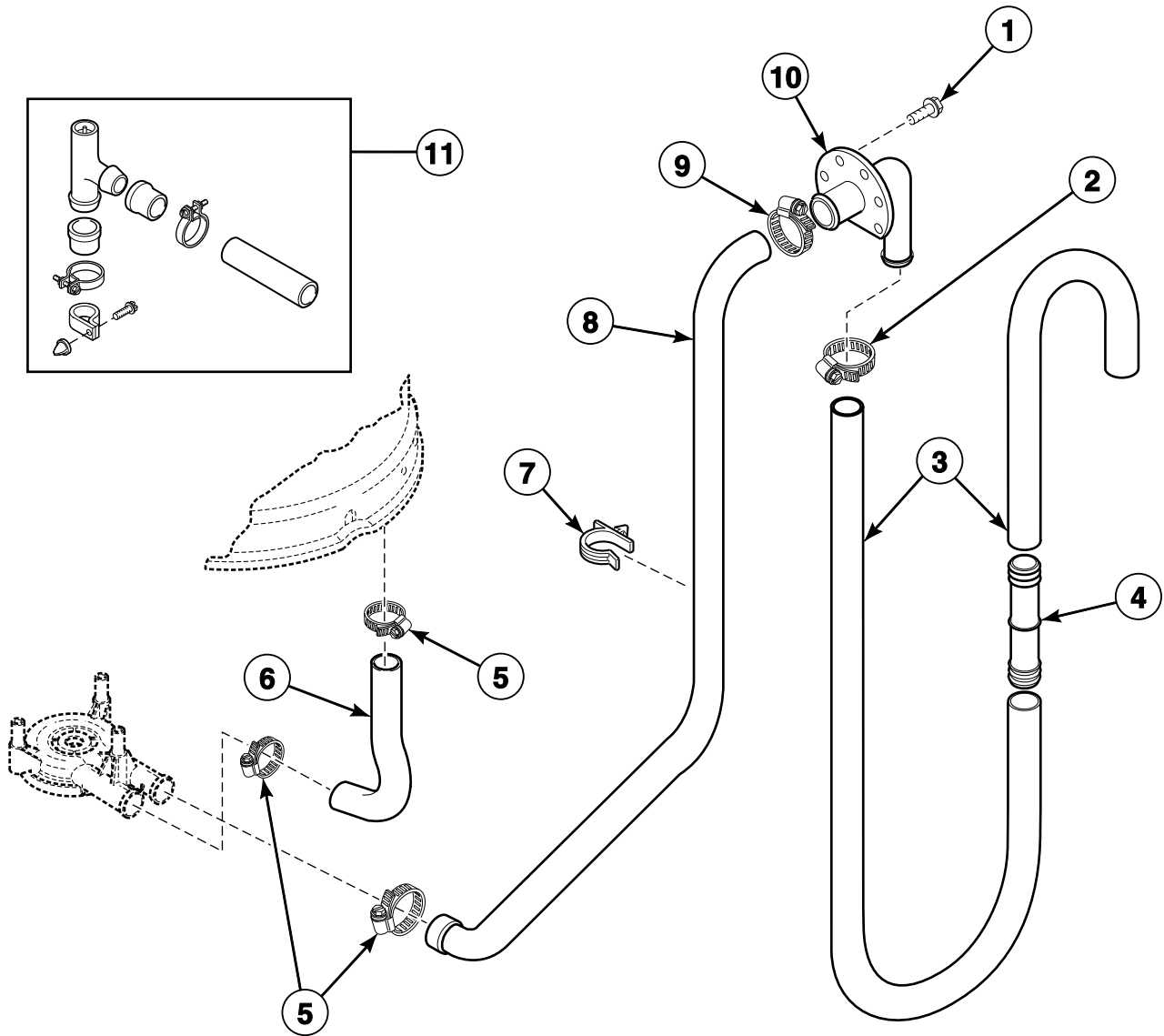


TLW1720P_202201

Transmission Assembly

REF	PART NO.	DESCRIPTION	COMMENTS
	27604P	Anti-Seize Compound	Apply to the smooth area of both the upper and lower transmission shafts
	37577P	Transmission Sealant	Use between transmission case and cover
1	36570P	Output Shaft	
2	201212	Hub Spacer	
3	RB150004	Transmission Rebuild Kit	Includes items 4, 17 and 37577P Transmission Sealant
4	27243P	Transmission Oil	1 fill
5	26577	Gear and Stud Assembly	
6	201773	Screw	
7	26509	Washer	
8	37405	Drive Pinion	
9	38268P	Input Shaft	
10	32814	Screw	
11	38165P	Transmission Assembly	
12	37471	Transmission Cover Assembly	
13	37404P	Reduction Gear	
14	29260	Washer	
15	29273	Screw	
16	26493	Slide	
17	201664	Rack	
18	27197	Retaining Ring	
19	27003	Agitator Pinion	
20	35092	Washer	
21	38864	Gear Sleeve	
22	33223P	Transmission Case Assembly	

Drain Hoses and Siphon Break Kit

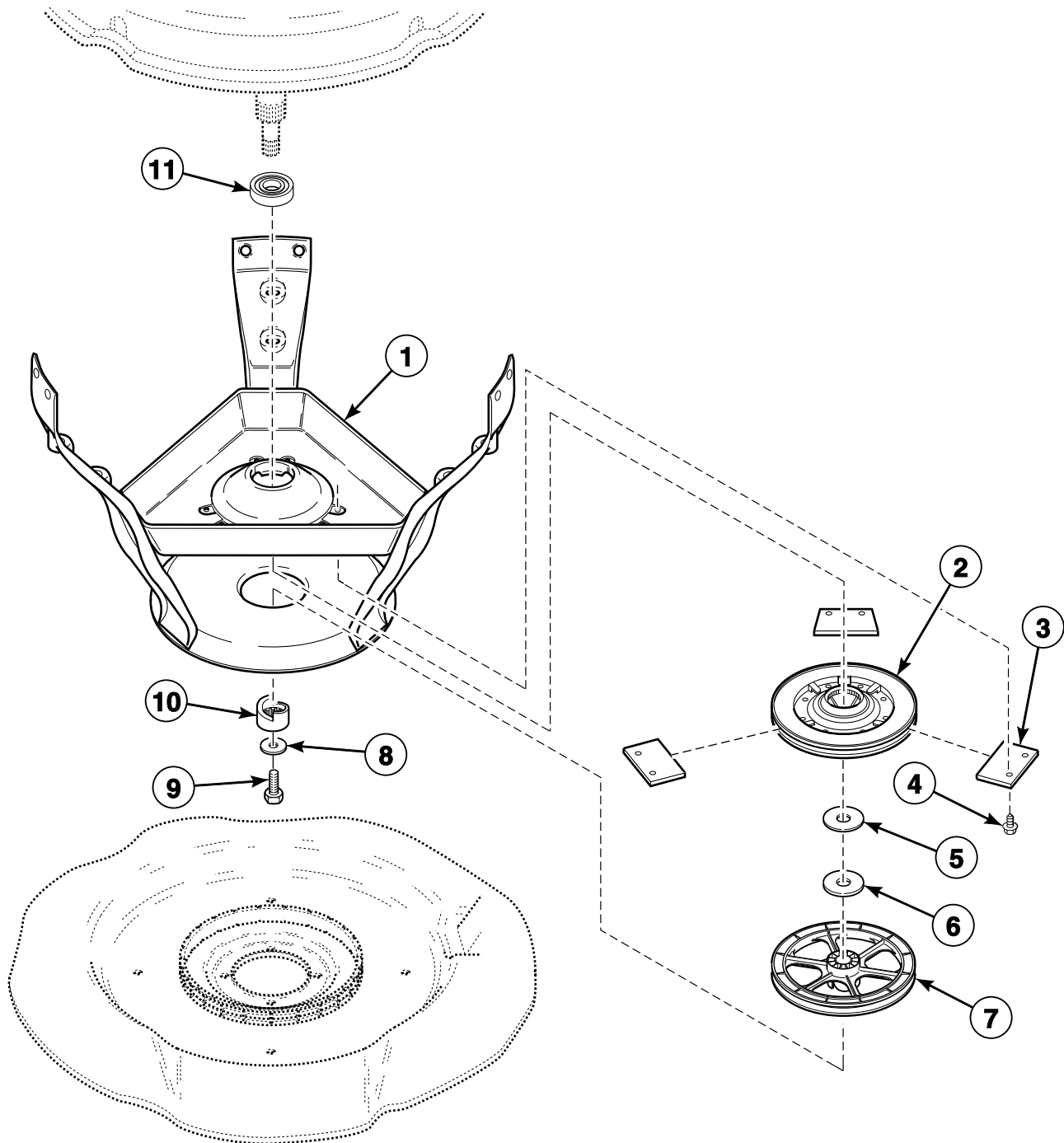


W354P_202201

Drain Hoses and Siphon Break Kit

REF	PART NO.	DESCRIPTION	COMMENTS
1	52909	Screw	
2	20211	Hose Clamp	
3	28293	Drain Hose	
4	25863	Hose Coupler	If drain hose must be shortened, cut hose between molded end and molded elbow; Use (1) 25863 Hose Coupler to splice hose
5	F200204	Hose Clamp	
6	38351	Tub-to-Pump Hose	
7	39177	Hose Retainer Clip	
8	38273	Pump-to-Drain Elbow Hose	
9	20391	Hose Clamp	
10	35766	Drain Hose Elbow	Models SWNLX2SP301AW01 and SWNLY2SP301NW22
	36990	Drain Hose Elbow	All other models
11	562P3	Siphon Break Kit	Siphon break kit must be installed in drain hose if drain receptacle is lower than cabinet top of washer

Weldment and Bearing Assembly, Brake and Pulley

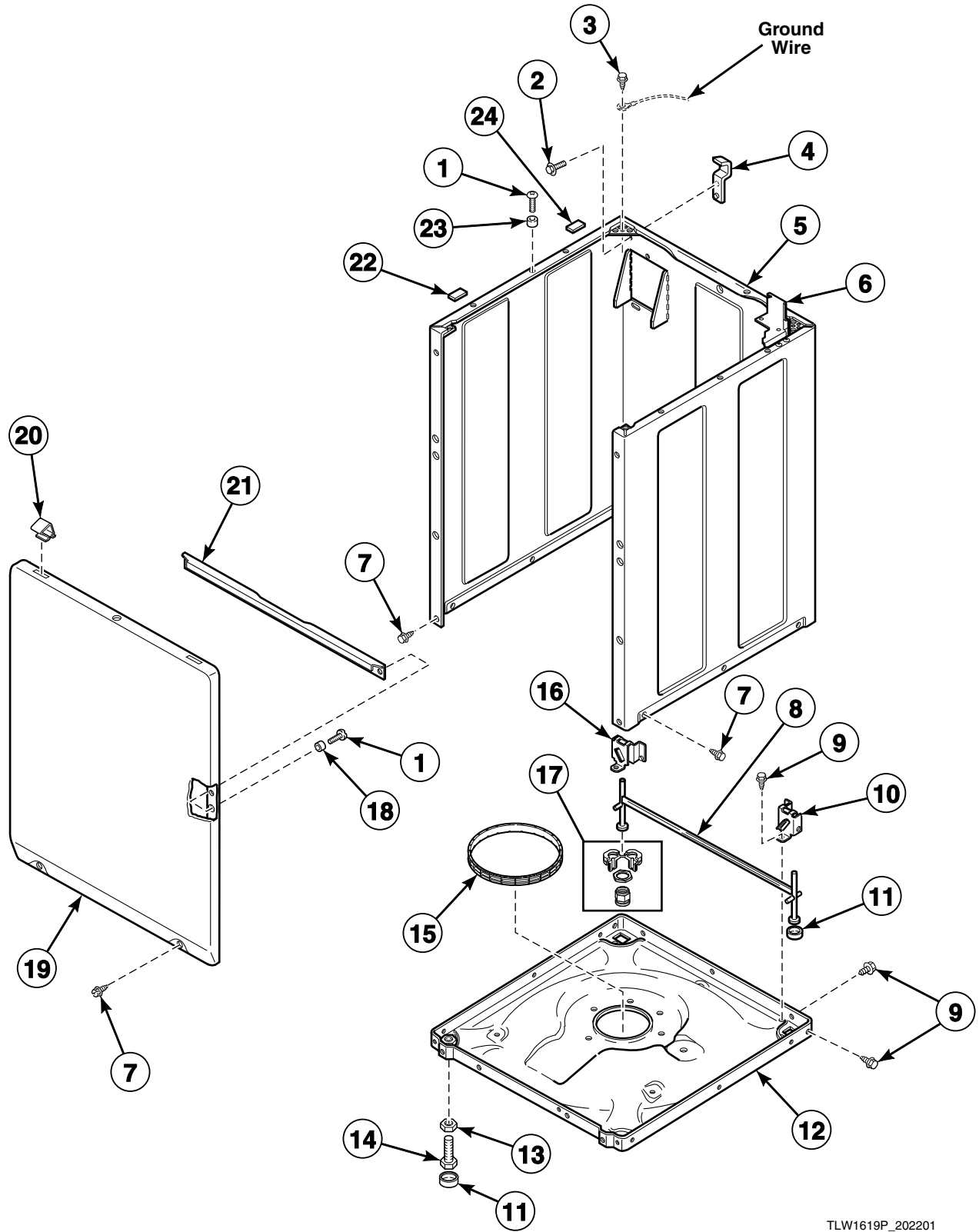


W333P_202201

Weldment and Bearing Assembly, Brake and Pulley

REF	PART NO.	DESCRIPTION	COMMENTS
1	39253	Weldment and Bearing Assembly	
2	38505P	Brake Kit	
3	735P3	Brake Pad Kit	Includes 3 pads
	204253	Silicone Grease	Apply small amount to each new brake pad
4	39739	Screw	
5	35535	Washer	Thin
6	27015	Washer	Thick
7	204942	Pulley	Models SWNLX2SP301AW01 and SWNLY2SP301NW22
	204486	Pulley	All other models
8	26509	Washer	
9	27220	Screw	
10	38008	Helix	
11	28944RP	Lower Bearing	

Front Panel, Base Assembly and Cabinet Kit

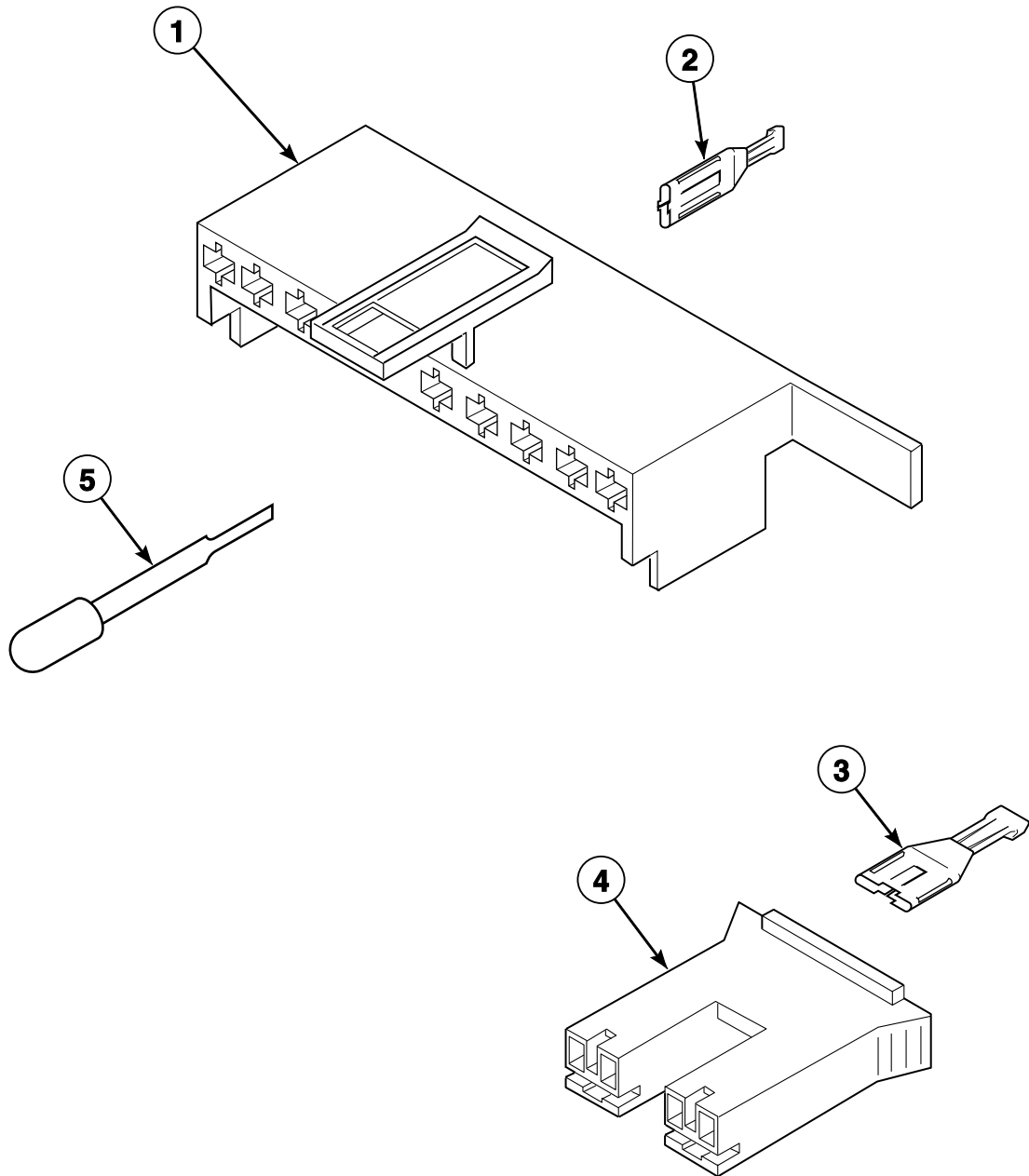


TLW1619P_202201

Front Panel, Base Assembly and Cabinet Kit

REF	PART NO.	DESCRIPTION	COMMENTS
	122P4P	Porcelain Touch-Up Paint	White
	370P4P	Porcelain Touch-Up Paint	Bisque
1	39733	Screw	
2	51780	Screw	
3	52909	Screw	
4	27103	Hold-Down Lug Hinge	
5	38612QP	Service Cabinet Kit	Model SWNLC2SP111TQ01
	38612WP	Service Cabinet Kit	All other models
6	35915	Meter Case Mounting Bracket Assembly	
7	27196	Screw	Slotted hex head
	431287	Screw	Torx head
8	34443	Leg and Stabilizer Assembly	
9	35148	Screw	
10	36036	Bracket	Right
11	34318	Rubber Foot	
12	39788	Base Assembly	
13	21899	Nut	
14	34319	Leveling Leg	
15	37937	Friction Ring	
16	36037	Bracket	Left
17	566P3	Adjustable Leg Extension Kit	Provides adjustment capabilities to rear self-leveling legs
18	28102	Panel Locator	
19	38335QP	Front Panel	Model SWNLC2SP111TQ01
	204870	Front Panel	All other models
20	35865	Hold-Down Clip	
21	35097	Front Panel Brace	
22	56128	Bumper Pad	
23	56079	Panel Locator	
24	36226	Bumper Pad	

Mixing Valve and Motor Disconnect Blocks, Terminals and Terminal Extractor Tool

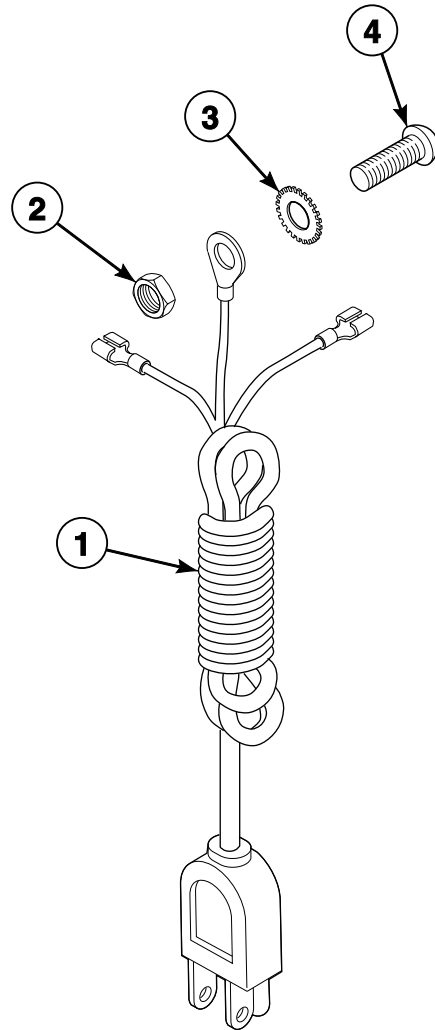


W134PZ3A_202201

Mixing Valve and Motor Disconnect Blocks, Terminals and Terminal Extractor Tool

REF	PART NO.	DESCRIPTION	COMMENTS
1	34677	10 Circuit Plug	Motor
2	00188	Female Terminal	For 1 or 2 wire application
3	00121	Female Spade Terminal	1/4 inch
4	34675	Mixing Valve Plug	Natural
	34676	Mixing Valve Plug	Red
5	283P4	Terminal Extractor Tool	

Lead-In Cord

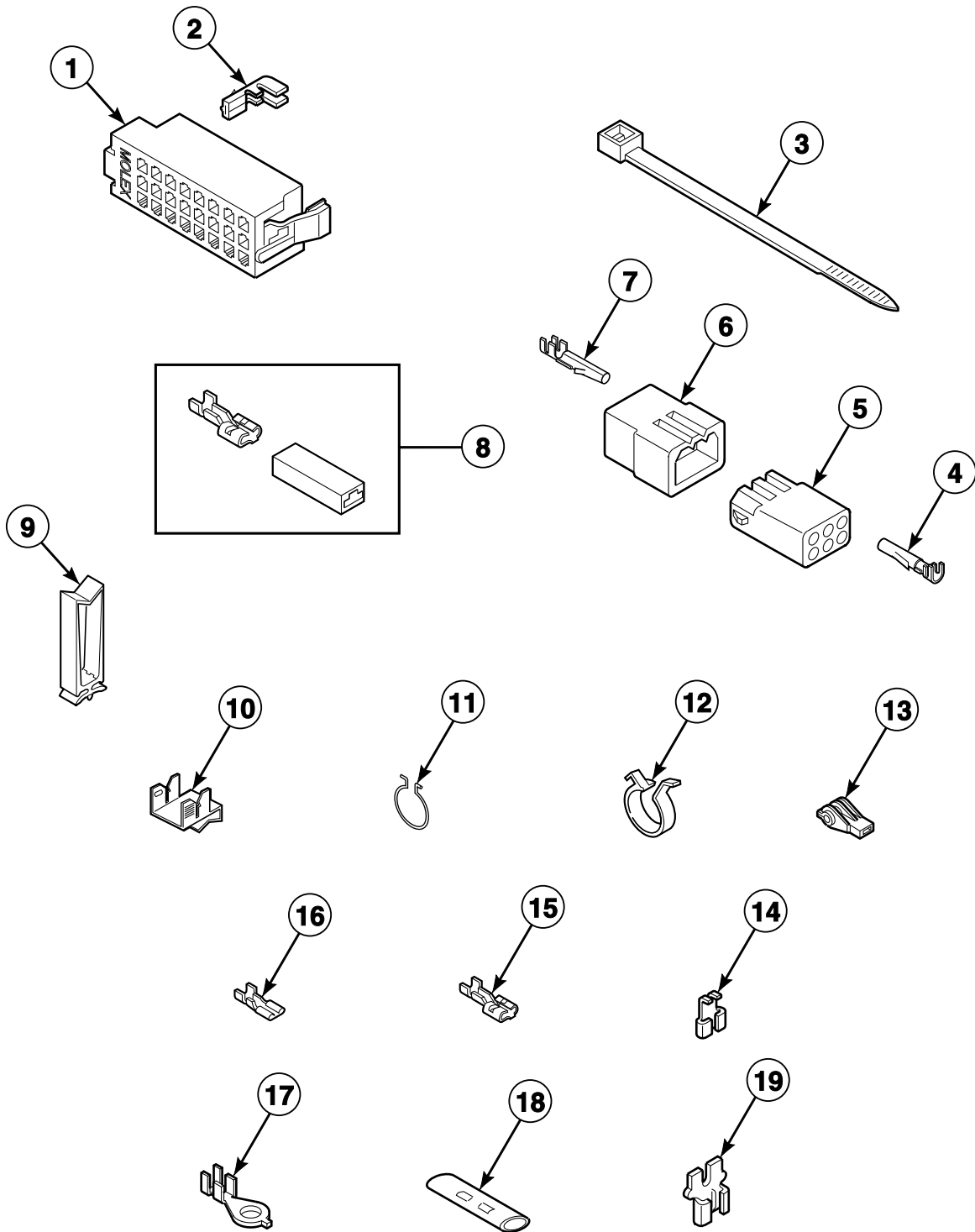


TLW1089P_202201

Lead-In Cord

REF	PART NO.	DESCRIPTION	COMMENTS
1	39931	Power Cord Assembly	Model SWNLX2SP301AW01
	38362P	Lead-In Cord	Model SWNLY2SP301NW22
	34458	Lead-In Cord	All other models
2	03673	Nut	
3	21735	Washer	
4	20267	Screw	

Terminals

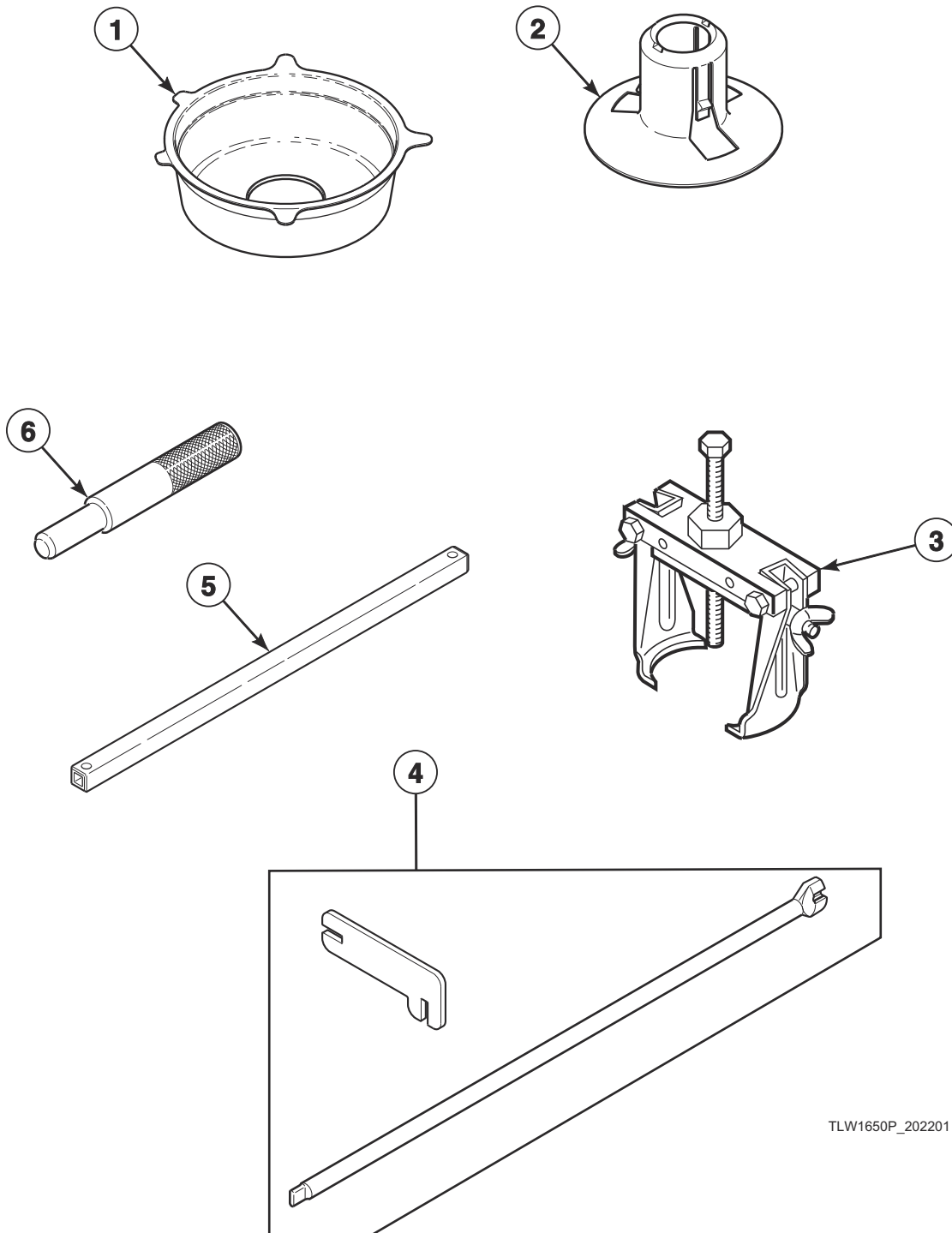


TLW1645P_202201

Terminals

REF	PART NO.	DESCRIPTION	COMMENTS
1	32746	24 Position Housing	Right; Black
	34123	24 Position Housing	Left; White
2	00188	Female Terminal	Used for 1 or 2 wire application
3	55881	Harness Strap	
4	00117	Female Pin Terminal	
5	26301	1 Circuit Receptacle	
	26708	6 Circuit Receptacle	
	26163	9 Circuit Receptacle	
6	26302	1 Circuit Plug	
	23041	6 Circuit Plug	
	23033	9 Circuit Plug	
7	00116	Male Pin Terminal	
8	00359	Insulated Female Spade Terminal	
9	70366201	Wire Clip	
10	00161	Grounding Clip	
11	51291	Wire Clip	
12	D504034	Wire Clip	
13	70210	Insulator	
14	00120	Female Flag Terminal	
15	00223	Female Spade Terminal	Large spade
16	00112	Female Spade Terminal	Small spade
17	00110	Ring Terminal	Small shank
18	21091	Connector	
19	F140562	Connector	

Shipping Materials and Special Tools

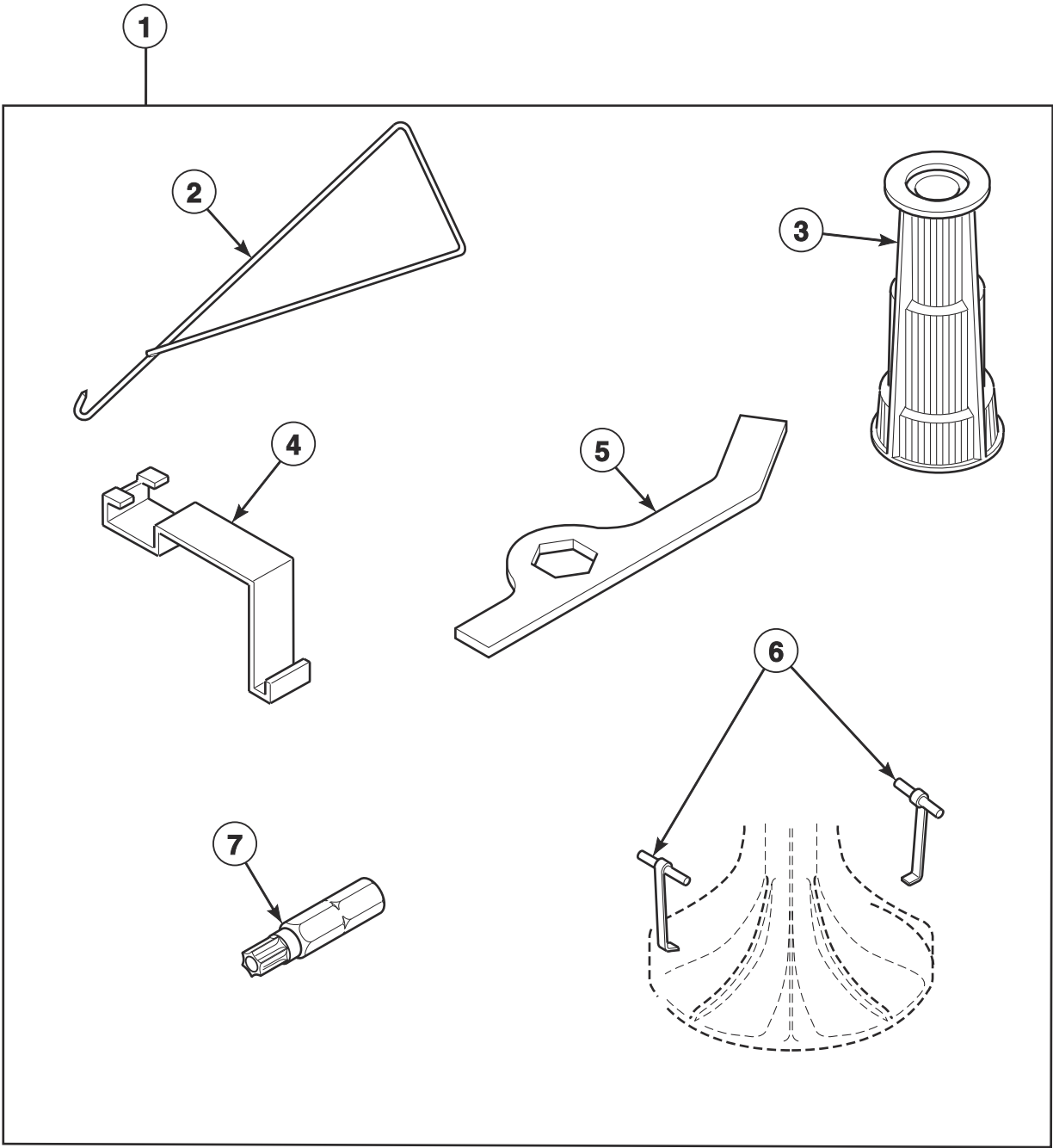


TLW1650P_202201

Shipping Materials and Special Tools

REF	PART NO.	DESCRIPTION	COMMENTS
1	200552	Shipping Brace	Install whenever moving washer; Remove before use
2	38149	Shipping Plug	Install whenever moving washer; Remove before use
3	294P4	Agitator Drive Bell Puller	For removal and installation of drive bell to transmission shaft
4	CK096	Mounting Tool Kit	Use to install and remove electronic coin drops
5	310P4	Ratchet Extension Tool	1/4 inch; Use to install and remove non-electronic coin drops
6	305P4	Transmission Pin Tool	Use pin tools in place of dowel pins when reassembling transmission cover and case; 2 required

Special Tools

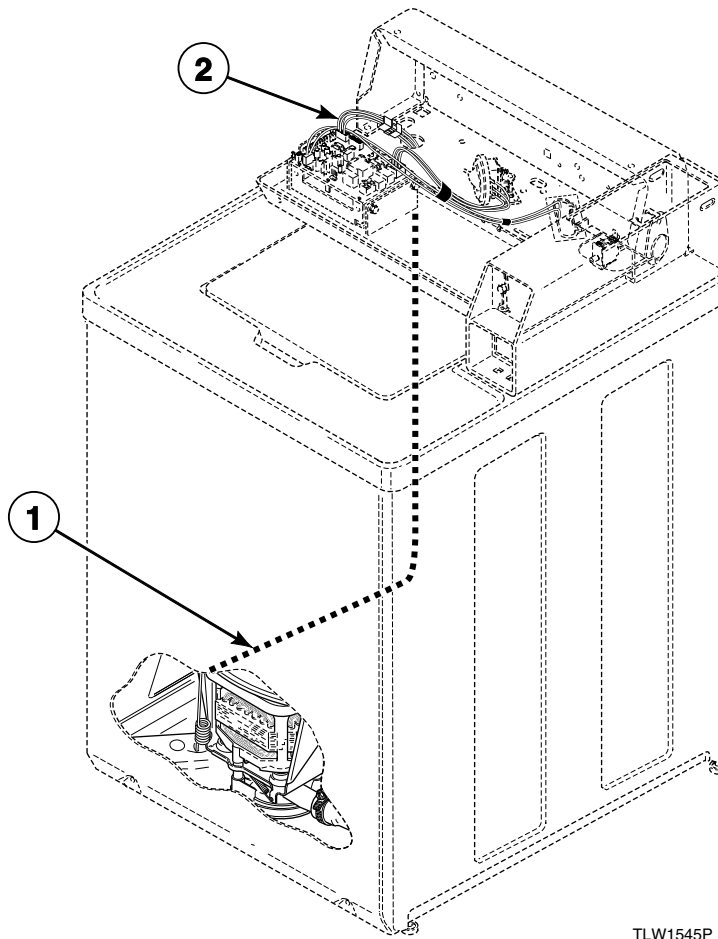


TLW1818P_202201

Special Tools

REF	PART NO.	DESCRIPTION	COMMENTS
1	725P3	Tool Kit	Includes items 2-7
2	321P4	Spring Hook Tool	For removal of centering springs from outer tub
3	293P4	Drive Bell Seal Tool	For installation of 36425 Bell and Transmission Tube Seal
4	273P4	Tub Cover Removal Tool	Use to install 38359 Tub Cover Gasket in outer tub cover
5	306P4	Hex Wrench Tool	For removal of locknut from washtub hub
6	254P4P	Agitator Hook	Use to remove agitator from drive bell; Set of 2
7	281P4	Torx Bit	T15; For removal and installation of control hood security screws
	282P4	Torx Bit	T25; For removal and installation of front panel security screws

Wire Harnesses and Wires



TLW1545P_202201

Wire Harnesses and Wires

REF	PART NO.	DESCRIPTION	COMMENTS
	45001	18 Gauge Wire	Black; Order wire by foot and terminals as required
	45380	12 Gauge Wire	Orange; Order wire by foot and terminals as required
1	201466	Base Wire Harness Assembly	Models SWNLX2SP301AW01 and SWNLY2SP301NW22
	38661P	Wire Harness Assembly	Base; All other models
2	202042	Wire Harness Assembly	Hood; Models SWNLX2SP301AW01 and SWNLY2SP301NW22
	202041	Wire Harness Assembly	Hood; All other models; Models through Serial No. 1110007358
	202375	Wire Harness Assembly	Hood; All other models; Models starting Serial No. 1110007359

NOTE: Individual wires are not available separately. Order complete harness, or order wire by the foot. When applying terminals to wires, it is recommended that the terminals be soldered to the wires.

This image shows a single page of white paper with horizontal blue or grey ruling lines. The lines are evenly spaced and run across the width of the page, typical of notebook paper. There are no margins, text, or other markings on the page.

Parts Index

A

Adjustable Leg Extension Kit	
566P3	39
Agitate and Spin Belt	
200923	25, 27
38174	25, 27
Agitator	
33174	29
Agitator Cap	
36515	29
Agitator Drive Bell Puller	
294P4	47
Agitator Hook	
254P4P	49
Agitator Pinion	
27003	33
Anti-Seize Compound	
27604P	33

B

Backflow Preventer	
34500	23
Balance Ring Assembly	
39836	29
Base Assembly	
39788	39
Base Wire Harness Assembly	
201466	51
Bell and Transmission Tube Seal	
36425	29
Bell Plug	
36511	29
Belt and Pump Kit	
RB150003	25
Bolt	
203798	5
32184	17
Bracket	
201918	17
202083	19
36036	39
36037	39
Brake Kit	
38505P	37
Brake Pad Kit	
735P3	37
Bumper	
M400795	9, 11, 13, 15
21685	19
Bumper Pad	
36226	39
56128	39
Bushing	
33446	19

C

Cable Clip	
21036	31
Cable Connection Box	
39922	13
Capacitor	
37377	25
Capacitor Clamp	
37535	25
Clip	
201572	7
Coin Box Extension Kit	
803578P	5
Coin Drop	
38963P	5
70441601P	5
Coin Drop Assembly	
38462P	5
38463	5
38464P	5
38467	5
70441602	5
70447301	5
70482401	5
Coin Drop Wire Harness	
201104	7
Coin Identification Paper	
38725	7
Connector	
F140562	45
21091	45
Control Assembly	
202311P	9, 11, 13, 15
Control Hood	
210142W	11, 15
37075Q	9
37075W	9, 13
Control Overlay	
202415	11, 15
202417	9
202418	11
Control Panel Assembly	
210042Q	9
210042W	9, 13
210137W	11, 15
Control Panel Bumper	
202469	9, 11, 13, 15
Control Panel Overlay	
202416	9, 13
Control Shield	
210053	9, 11, 13, 15
Control Sticker Overlay	
202309	9, 11
Counterweight Assembly	
38769	31

N/A items do not appear in index.

D

Diagnostic Wire Harness Assembly	
800680	11, 15
Disconnect Power Warning Label	
D505281	11, 15, 19
Drain Hose	
28293	35
Drain Hose Elbow	
35766	35
36990	35
Drive Bell and Seal Kit	
39508P	29
Drive Bell Seal Tool	
293P4	49
Drive Pinion	
37405	33

E

Electronic Coin Drop Assembly	
70294103P	7
70294104	7
70294106	7
70294107	7
70294110	7
70294111	7
70294117	7
70294120	7
70294121	7
70513311	7
Electronic Coin Drop Kit	
CK099	7
CK100	7
CK101	7
CK103	7
CK108	7
CK109	7
CK110	7
CK113	7
CK115	7
CK116	7
CK117	7
CK118	7
CK120	7
CK121	7
End Cap	
210108W	11, 15
210109W	11, 15
Ethernet Gateway Kit	
NK320	9, 11, 13, 15

F

Female Flag Terminal	
00120	45
Female Pin Terminal	
00117	45
Female Spade Terminal	
00112	45
00121	41
00223	45

Female Terminal	
00188	41, 45
Fill Hose	
20617	23
20618	23
37380	23
37381	23
Fill Hose Kit	
38349P	23
Friction Ring	
37937	39
Front Panel	
204870	39
38335QP	39
Front Panel Brace	
35097	39

G

Gear and Stud Assembly	
26577	33
Gear Sleeve	
38864	33
Grease	
36765P	29
Grommet	
29175	31
80262	19
Grounding Clip	
00161	45

H

Harness Assembly	
802904P	5
802905	5, 7
Harness Strap	
55881	45
Helix	
38008	37
Hex Wrench Tool	
306P4	49
Hinge Gasket	
34338	19
Hold-Down Clip	
35865	39
Hold-Down Lug Hinge	
27103	39
Hood Back Panel	
38267	9
39920	13
Hose Clamp	
F200204	35
20211	35
20391	35
36801	23
39282	31
800803	23
Hose Clip	
36985	31
Hose Coupler	
25863	35

N/A items do not appear in index.

Hose Retainer Clip	
39177	35
Housing, 24 Position	
32746	45
34123	45
Hub and Lip Seal Kit	
766P3A	29, 31
Hub Spacer	
201212	33

I

Idler Lever	
38011	25, 27
Idler Lever and Belt Kit	
202972	27
Idler Lever Kit	
959P3	25
Idler Lever Spring	
201189	25, 27
202032	25, 27
Idler Pulley	
38225P	25, 27
Idler Shaft	
210186	25, 27
Input Shaft	
38268P	33
Insulated Female Spade Terminal	
00359	45
Insulator	
70210	45
Isolator Assembly	
204062	25
Isolator Post	
38325	25

J

Jumper Configuration Assembly	
M413507	13, 15

L

Lead-In Cord	
34458	43
38362P	43
Lead-In Wire Harness Assembly	
201405P	13
Leg and Stabilizer Assembly	
34443	39
Leg Plate	
27926	31
Leg Spring	
201521	31
37575	31
Leveling Leg	
34319	39
Lid	
201761WP	19
204615W	19

Lid and Carton Assembly	
201460QP	19
Lid Hinge	
36437	19
36438	19
Lid Plug	
34153	19
Lid Switch Assembly	
37631	21
Lower Bearing	
28944RP	37

M

Male Pin Terminal	
00116	45
Male Tab Terminal	
00177	25
Meter Case Assembly	
202877Q	5
202877W	5
802505W	5
Meter Case Assembly Kit	
807401W	5
Meter Case Bracket Gasket	
35526	5
Meter Case Gasket	
26354	5
Meter Case Lockdown Bracket	
35525	5
Meter Case Locking Bracket Kit	
204616	5, 17
Meter Case Mounting Bracket Assembly	
35915	39
Mixing Valve	
201402P	23
201468P	23
39070P	23
Mixing Valve Kit	
RB150001	23
Mixing Valve Mounting Bracket	
39407	23
Mixing Valve Plug	
34675	41
34676	41
Mixing Valve Screen	
24122	23
Mixing Valve-to-Tub Cover Hose	
38155	23
Motor Kit	
201433P	25
38034P	25
Motor Mount	
204449	25
Motor Mount Bracket	
200941	25
Motor Shield	
34754	25
Mounting Tool Kit	
CK096	47

N/A items do not appear in index.

N

Network Controller Kit	
NK220	9, 11, 13, 15
Network Retrofit Kit	
NK201	9, 11, 13, 15
Nut	
M400981	21
03673	43
201216	7
21899	39
23951	17
27222	19
28803	25, 27
29220	29
29786	5
35423	25
36020	19
52566	9, 13, 25
802337	5

O

Options Label	
202331	9, 11
202332	9, 11, 13, 15
Opto Coupler	
200674P	5
Outer Tub Assembly	
203603P	31
Outer Tub Flange Kit	
636P3	31
Output Shaft	
36570P	33
Overlay	
201091	7

P

Panel Locator	
28102	39
56079	39
Plug, 1 Circuit	
26302	45
Plug, 10 Circuit	
34677	41
Plug, 6 Circuit	
23041	45
Plug, 9 Circuit	
23033	45
Porcelain Touch-Up Paint	
122P4P	39
370P4	39
Power Cord Assembly	
39931	13, 43
Pressure Bulb	
30907	31
Pressure Switch	
201997P	9, 11
803637	9, 11, 13, 15
803638P	9, 11, 13, 15

Pressure Switch Bracket	
201789	9, 11, 13, 15
Pulley	
204486	37
204942	37
Pump	
201566P	25
Pump Assembly	
201442P	25
Pump-to-Drain Elbow Hose	
38273	35

R

Rack	
201664	33
Ratchet Extension Tool	
310P4	47
Rear Panel	
201919	17
210143	11, 15
Receptacle, 1 Circuit	
26301	45
Receptacle, 6 Circuit	
26708	45
Receptacle, 9 Circuit	
26163	45
Reduction Gear	
37404P	33
Resistor	
210100	13, 15
Retaining Ring	
23748	25, 27
27197	33
Ring Terminal	
00110	45
Rubber Foot	
34318	39

S

Screw	
D501086	9, 11, 13, 15
D501524	9, 11, 13, 15
D503661	9, 11, 13, 15
D503673	5, 19
D503688	17
M402574	21
02916	9, 13
201773	33
20267	43
20530	25
23008	19
23222	9, 13
23962	9, 11, 13, 15, 19, 21
27196	39
27202	29
27220	37
27229	25, 27
29273	33
32814	33
33562	23
34337	19

N/A items do not appear in index.

35148	39
35369	25, 31
35528	9, 13
36048	5
36639	25
39397	23
39432	29
39566	31
39733	39
39739	37
431287	19, 39
51780	39
52864	9, 11, 13, 15
52909	19, 25, 35, 39
Sealant	
200996P	29, 31
Security Kit	
904P3	17
Service Cabinet Kit	
38612QP	39
38612WP	39
Service Door Assembly	
39874QP	5
39874WP	5
803043WP	5
Shipping Brace	
200552	47
Shipping Plug	
38149	47
Shock Warning Label	
D511021	13
Silicone Grease	
204253	37
Single Overlay	
202123	5
38717	5
Siphon Break Kit	
562P3	35
Slide	
26493	33
Spline Insert	
29728	29
Spring Clip	
210202	25
Spring Hook Tool	
321P4	49
Strain Relief	
38384	19
Support Barrel	
56534	19
Switch	
D512973	5
33445	21
70529301	5

T

Terminal Extractor Tool	
283P4	41
Tool Kit	
725P3	49
Top	
39167QP	19
39167WP	19

Top Assembly	
210173WP	19
Top Shield	
39744	19
Torx Bit	
281P4	49
282P4	49
Transformer	
201375P	7, 9, 11
210018P	9
803527P	13, 15
Transmission Assembly	
38165P	33
Transmission Case Assembly	
33223P	33
Transmission Cover Assembly	
37471	33
Transmission Oil	
27243P	33
Transmission Pin Tool	
305P4	47
Transmission Rebuild Kit	
RB150004	33
Transmission Sealant	
37577P	33
Tub Cover and Gasket Assembly	
38573	31
Tub Cover Gasket	
38359	31
Tub Cover Removal Tool	
273P4	49
Tub Kit	
39250P	29
Tubing	
202700	31
Tub-to-Pump Hose	
38351	35

U

USB Gateway Kit	
NK330	9, 11, 13, 15

W

Warning Label	
D500049	31
D500316	11, 19
Washer	
D504082	25, 27
M400017	9, 13
02431	9, 13
200608	9, 11, 13, 15
20290	23
21735	43
25100	17
26509	33, 37
27015	37
28094	29
29260	33
35092	33
35535	37

N/A items do not appear in index.

37772	25
39249	19, 31
52549	25, 27
802254	23
803615	23
81392	25, 27
Washtub Gasket	
39122	29
Washtub Kit	
719P3	29
Water Hose	
F200116	23
Weldment and Bearing Assembly	
39253	37
Wire Clip	
D504034	45
51291	45
70366201	45
Wire Guard	
201595P	5
Wire Harness Assembly	
202041	51
202042	51
202375	51
38661P	51
Wireless Network Kit	
NK301	9, 11, 13, 15
Wire, 12 Gauge	
45380	51
Wire, 18 Gauge	
45001	51
