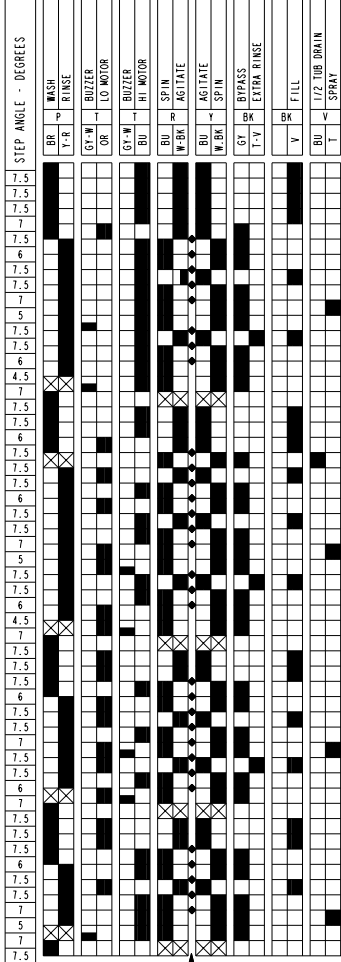


CAM	14	12	10	8	6	4	2	0
SW.	T B	T B	T B	T B	T B	T B	T B	T B
	11 12	32 6	33 5	14 7	7 14	2 21	10	5H 13



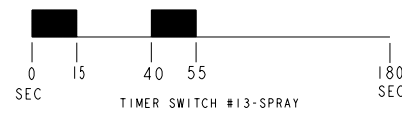
STEP	2	4	6	8	10	12	14	16	18	20	22	24	26	28	30	32	34	36	38	40	42	44	46	48	50	52
------	---	---	---	---	----	----	----	----	----	----	----	----	----	----	----	----	----	----	----	----	----	----	----	----	----	----

180 SECONDS PER STEP MACHINE FUNCTION

FILL - AGITATE HI	FILL & WASH	NORMAL HEAVY / REGULAR
DRY AGITATE - LO	SPIN HI	
FILL - AGITATE HI	FILL & RINSE	EXTRA RINSE
SPRAY	SPIN HI	
FILL-AGITATE HI	AUTO 2ND RINSE	PERMANENT PRESS
DRY AGITATE - LO	DRAIN HI	
FILL - AGITATE HI	FILL & WASH	EXTRA RINSE
1/2 TUB DRAIN	COOL DOWN	
FILL - AGITATE LO	DRAIN HI	DELICATE
SPRAY	SPIN LO	
FILL - AGITATE HI	FILL & RINSE	EXTRA RINSE
DRY AGITATE - LO	DRAIN HI	
FILL-AGITATE HI	AUTO 2ND RINSE	QUICK WASH
DRY AGITATE - LO	DRAIN HI	
FILL - AGITATE LO	FILL & WASH	OFF
DRY AGITATE - LO	DRAIN HI	
FILL - AGITATE LO	FILL & RINSE	OFF
SPRAY	SPIN LO	
FILL-AGITATE LO	AUTO 2ND RINSE	OFF
DRY AGITATE - LO	DRAIN HI	
FILL - AGITATE LO	FILL & WASH	OFF
DRY AGITATE - LO	DRAIN HI	
FILL - AGITATE LO	FILL & RINSE	OFF
SPRAY	SPIN LO	
FILL-AGITATE LO	AUTO 2ND RINSE	OFF
DRY AGITATE - LO	DRAIN HI	
FILL - AGITATE LO	FILL & WASH	OFF
DRY AGITATE - LO	DRAIN HI	
FILL - AGITATE LO	FILL & RINSE	OFF
SPRAY	SPIN HI	
FILL-AGITATE LO	AUTO 2ND RINSE	OFF
DRY AGITATE - LO	DRAIN HI	

• INDICATES MOTOR "OFF"

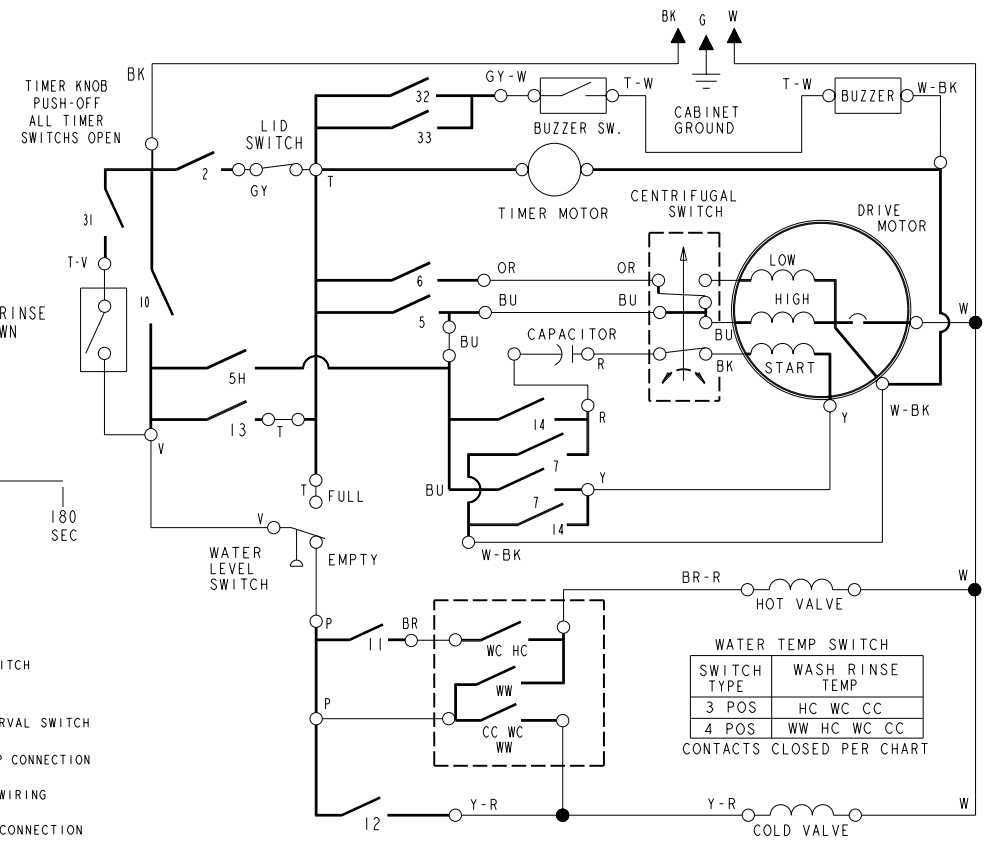
MANUFACTURED UNDER ONE OR MORE OF THE FOLLOWING UNITED STATES PATENTS:
 DES. 268,183 3,854,308 4,003,613 4,262,870
 3,576,117 3,856,036 4,005,882 4,268,098
 3,636,734 3,863,467 4,068,503 4,288,671
 3,681,947 3,880,188 4,118,957 4,291,556
 3,696,970 3,884,493 4,129,018 4,306,841
 3,744,418 3,939,674 4,163,457 4,324,035
 3,798,931 3,953,146 4,164,130 4,357,813
 3,798,932 3,987,508 4,174,622 4,366,902
 3,818,729 3,987,651 4,254,640 4,430,871
 3,847,812 4,000,631 4,254,641 4,432,528



LEGEND

- 0 - TIMER SWITCH
- 13 - SUB-INTERVAL SWITCH
- INT. COMP CONNECTION
- HARNESS WIRING
- HARNESS CONNECTION
- TERMINAL CONNECTION
- TIMER SWITCH MAY BE OPEN OR CLOSED

PART NO.
3954389
REV A



WATER TEMP SWITCH			
SWITCH TYPE	WASH RINSE TEMP		
3 POS	HC	WC	CC
4 POS	WW	HC	WC

CONTACTS CLOSED PER CHART

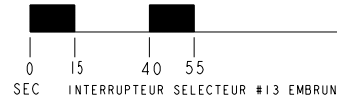
NUMERO DE PIECE
3954389
 REVISION A

FABRIQUE SELON UN OU PLUSIEURS
 DES BREVETS SUIVANTS DES CANADIENS
 1.022.764 1.128.597 1.244.255
 1.115.977 1.131.928 1.264.080
 1.117.778 1.160.855 1.274.701
 1.121.789 1.199.201 1.287.338
 1.126.536 1.199.202 1.290.161
 1.128.596 1.237.291 1.298.988

180 SECONDES PAR ETAPE
FUNCTION DE MACHINE

ETAPE	14	12	10	8	6	4	2	0
7.5	REPLIR-AGITEZ RAPIDE	REPLISSAGE ET LAVAGE						
7.5	SEC AGITEZ-LENT	VIDENT RAPIDE						
7		ROTATION RAPIDE						
6		REPLIR-AGITEZ RAPIDE	REPLISSEZ ET RINCEZ					
7.5	GICLAGE	VIDENT RAPIDE						
7		ROTATION RAPIDE						
5		REPLIR-AGITEZ RAPIDE	ARRET					
7.5		VIDENT RAPIDE						
7.5		ROTATION RAPIDE						
6		REPLIR-AGITEZ RAPIDE	ARRET					
4.5		VIDENT RAPIDE						
7		ROTATION RAPIDE						
7.5		REPLIR-AGITEZ RAPIDE	REPLISSAGE ET LAVAGE					
7.5		REPLIR-AGITEZ LENT	REFROIDISSEZ					
7.5		DRAIN DE BAQUET DE 1/2						
7.5		REPLIR-AGITEZ LENT						
6		VIDENT RAPIDE						
7.5		ROTATION RAPIDE						
7.5		REPLIR-AGITEZ RAPIDE	REPLISSEZ ET RINCEZ					
7		VIDENT RAPIDE						
5		ROTATION LENT						
7.5		ARRET	AUTO					
7.5		REPLIR-AGITEZ RAPIDE	2ND RINÇAGE					
6		VIDENT RAPIDE						
7		ROTATION LENT						
7.5		ARRET						
7.5		REPLIR-AGITEZ LENT	REPLISSAGE ET LAVAGE					
7.5		VIDENT RAPIDE						
7.5		ROTATION RAPIDE						
6		REPLIR-AGITEZ LENT	REPLISSEZ ET RINCEZ					
7		ROTATION RAPIDE						
5		GICLAGE	ROTATION RAPIDE					
7.5		ARRET						

◆ INDOQUE MOTEUR "ARRET"



COMMUNTEUR SUPPLEMENTAIRE DE RINÇAGE MONTRE OUTRE DE

LEGENDE

- INT. DU PROGRAMMATEUR
- INTERRUPTEUR INTERMITTENT
- CONNEXION INTERNE DE COMPOSANT
- FAISCEAU DE FILS
- CONNEXION DE FILS
- CONNEXION DE LA BORNE
- X L'INTERRUPTEUR DU PROGRAMMATEUR PEUT ETRE OUVERT OU FERME

