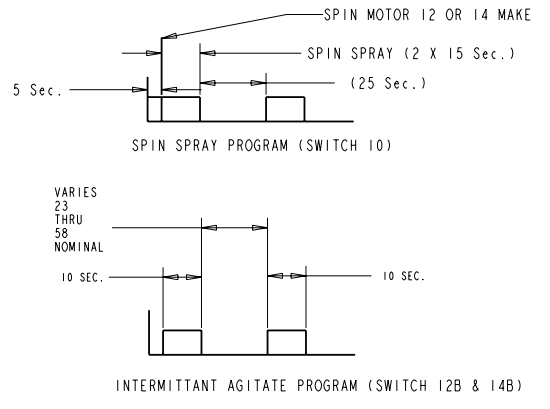


KEY  
 □ CONTACT OPEN ON CHART  
 ■ CONTACT CLOSED ON CHART  
 ⌋ DIAL-IN LOCATION

ENGLISH	FRENCH	SPANISH
AGITATE	AGITER	AGITAN
BLEACH	BLANCHIMENT	BLANQUEO
BUZZER	VIBEUR	SENAL SONORA
BYPASS	DERIVATION	PUENTE
DRAIN	VIDENT	DRENAN
EXTRA RINSE	RINCAGE DE PLUS	ADICIONAL ACLARACION
FILL	REPLISSAGE	LLENAN
HIGH	HAUT	ALTO
INT AGITATE	AGITER INTERMITTENT	INTERMITENTE AGITE
LO	LENT	BAJO
MED	MED	MEDIA
MOTOR	MOTEUR	MOTOR
NORMAL	NORMALE	NORMAL
PERMANENT PRESS	SYNTHETIQUES	PERMANENT PRENSA
PREWASH	PRE LAVAGE	PRE COLADA

ENGLISH	FRENCH	SPANISH
RINSE	RINCAGE	ACLARACION
SOAK	IMBIBERT	REMOJAN
SPIN	ESSORAGE	VUELTA
SPRAY	CICLAGE	AEROSOL
WASH	LAVAGE	COLADA
TIMED FILL	SYNCHRONISES REPLISSAGE	SINCRONIZADO TERRAPLEN
1/2 TUB DRAIN	1/2 COVETTE VID	DREN DE LA TINA DEL 1/2
FAB. SOFTNER	RAMOLLISSANT DE TISSU	SUAVIZADOR DE LA TELA
DETERGENT	DETERGENT	DETERGENTE
ULTRA CLEAN	ULTRA PROPRE	ULTA LIMPIO



- NOTES:
- 4.1. PRINTING TO BE BLACK ON WHITE BACKGROUND
  - 4.2. PART TO HAVE PRINTING ON BOTH SIDES AS FOLLOWS:  
ONE SIDE WIRING DIAGRAM OPPOSITE SIDE MACHINE FUNCTION CHART (USE SHEET 2 OF TIMER DRAWING W10175557).

- 4.3. DIAGRAMS TO BE FOLDED IN HALF 3 TIMES, WITH SCHEMATIC OUT AND PART NUMBER SHOWING.
- 4.4. MATERIAL: 22.7 KG ( 50LB )WHITE OFFSET.
- 4.5. SEE FEATURE PANEL DRAWING FOR LABEL LOCATION.
- 4.6. FOR USE WITH W10175557 TIMER, ANY CHANGE TO THIS DRAWING MAY AFFECT THE TIMER DRAWING.
- 4.7. LABEL FULL SIZE: 216 BY 280 ( 8.5 BY 11.0 INCHES).

PART NO. NUMERO DE PIECE NUMERO DE PIEZA	REV REVISION REVISION
<b>W10175559</b>	<b>B</b>

LEGEND / LEGENDE / LEYENDA

- TIMER SWITCH  
INT. DU PROGRAMMATEUR  
INTERRUPTOR DEL TEMPORIZADOR
- INT. COMP CONNECTION  
CONNEXION INTERNE DE COMPOSANT  
CONEXION INTERNO DEL COMPONENTE
- HARNESS WIRING  
FAISCEAU DE FILS  
CABLEADO DEL HARNESS
- HARNESS CONNECTION  
CONNEXION DE FILS  
CONEXION DEL HARNESS
- TERMINAL CONNECTION  
CONEXION DE LA BORNE  
TERMINAL CONEXION

WASH RINSE / RINCAGE DE LAVAGE  
/ ACLARACION DE LA COLADA

DRIVE MOTOR / MOTEUR / IMPULSOR MOTOR

- L** LOW / LENT / BAJO
- M** MEDIUM / SUPPORT / MEDIA
- H** HIGH / HAUT / ALTO
- S** START / DEMARRENT / EMPIEZAN

HOT VALVE  
SQUAPE D'EAU CHAUDE  
CALIENTE VALVULA

COLD VALVE  
SQUAPE D'EAU FROIDE  
FRIA VALVULA

- WATER LEVEL SWITCH  
INTERRUPTEUR NIVEAU D'EAU  
INTERRUPTOR DEL NIVEL DEL AGUA
- FULL / PLEIN / POR COMPLETO
- EMPTY / VIDE / VACIO
- LID SWITCH  
INTERRUPTEUR DU COUVERCLE  
INTERRUPTOR DE LA TAPA
- TIMER MOTOR  
MOTEUR DE LA MINUTERIE  
MOTOR DEL TEMPORIZADOR
- CENTRIFUGAL SWITCH  
CONTACTEUR CENTRIFUGE  
CENTRIFUGO INTERRUPTOR

CABINET GROUND  
TERRE DU CHASSI  
CABIN MOLIDA

CAPACITOR / CONDENSATEUR /  
CONDENSADOR

BUZZER / VIBREUR / SENAL SONORA

**TSC** TEMPERATURE SWITCH CHART  
DIAGRAME DE COMMUTATEUR DE LA TEMPERATURE  
CARTA DE INTERRUPTOR DE LA TEMPERATURE

BI-METAL  
BI-MÉTAL  
BI-METAL

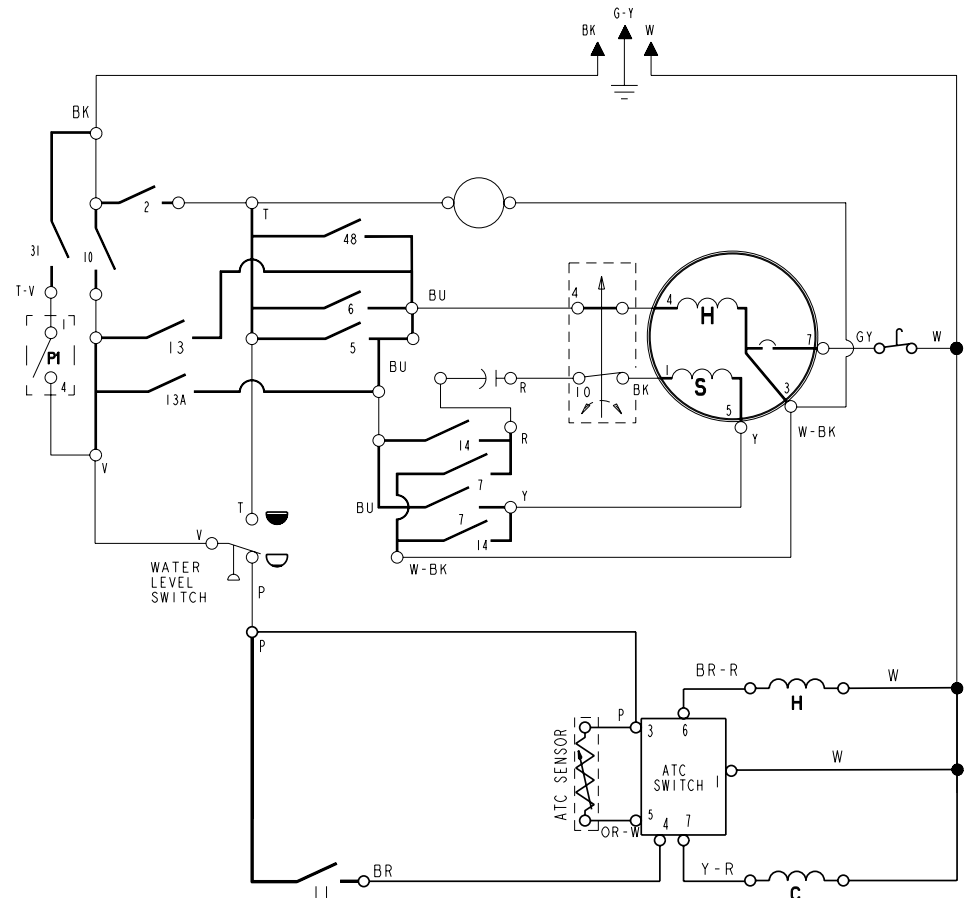
EXTRA-RINSE SUPPLEMENTAIRE RINCAGE ADICIONAL ACLARACION	
	P I
OFF / ARRET / DE	
ON / SUR / EN	X

MANUFACTURED UNDER ONE OR MORE  
OF THE FOLLOWING US PATENTS:  
4545947, 4555919, 4566295, 4572996, 4618193,  
4624111, 4643350, 4646565, 4658864, 4658867,  
4692987, 4693095, 4697293, 4700554, 4709951,  
4715401, 4718769, 4754622, 4755292, 4744922,  
4779431, 4782544, 4784666, 4785644, 4793820,  
4807452, 4809254, 4815991, 4854559, 4856303,  
4870980, 4888865, 4890465, 4891959, 4810979,  
4945335, 4945316, 4963941, 4971138, 4973794,  
4986093, 4987627, 5000016, 5031427, 5033277,  
5074003, 5075613, 5113542, 5138624, 5150588,  
5154071, 5166080, 5167722, 5175215, 5174539,  
5191667, 5191668, 5191669, 5193361, 5199127,  
5199281, 5200864, 5205141, 5213970, 5233718,  
5249441, 5252844, 5257901, 5259217, 5269160,  
5271251, 5297403, 5304565, 5317136, 5314044,  
5340831, 5345792, 5345793, 5359744, 5373715,  
5400910, 5403142, 5504965, 5507025,  
5582939, 5582189, 5651278, 5671494, 5765404,  
5784902, 5791167, 5830180, 5852942, 5875855,  
5878602, 5883480, 5946946, 6065171, 6070582,  
6105403, 6115863, 6125480, 6185774, 6272722,  
6227013, 6227014, 6289868, 6347845, 6363563,  
6393870, 6430971, 6505370, 6314263, 6375390,  
6381140, 6423740, 6458668, 6456572,  
6459844, 6463631, 6465308

FABRIQUE SOUS UN OU PLUSIEURS  
DES BREVETS CANADIENS SUIVANTS:  
1228410, 1233879, 1238550, 1282557,  
1287338, 1288986, 1288988, 1301469,  
1306367, 1313770, 2018975, 2022266,  
2043393, 2056989, 2086151, 076616

MANUFACTURADO BAJO UNA O MAS DE  
LAS SIGUIENTES PATENTES MEXICANAS:  
159840, 159883, 161744, 163722, 164305,  
164407, 165938, 165992, 170221, 174158,  
174478, 174483, 177784, 177786, 181185,  
182183, 182396, 182692, 187726, 189682,  
189768, 192502, 192503, 198393, 198844,  
205519, 211042

TIMER KNOB PUSH OFF  
ALL TIMER SWITCHES OPEN  
TIRE POUR MARCHE POUSSÉ POUR ARRETE  
BOUTON-FOUSSOIR DU PROGRAMMATEUR  
LOS INTERRUPTORES SE ABREN  
CUANDO LA PERILLA EMPUJO DE



TSC W10113058				
POS	WASH / RINSE	WASH TEMP	RINSE TEMP	
1	C/C	COLD	COLD	
2	C/C	62°	COLD	
3	W/C	78°	COLD	
4	H/C	105°	COLD	

TSC W10114118				
POS	WASH / RINSE	WASH TEMP	RINSE TEMP	
1	C/C	COLD	COLD	
2	C/C	70°	COLD	
3	W/C	82°	COLD	
4	H/C	110°	COLD	

TSC 8578335				
POS	WASH / RINSE	WASH TEMP	RINSE TEMP	
1	C/C	COLD	COLD	
2	C/C	70°	COLD	
3	W/C	93°	COLD	
4	H/C	110°	COLD	