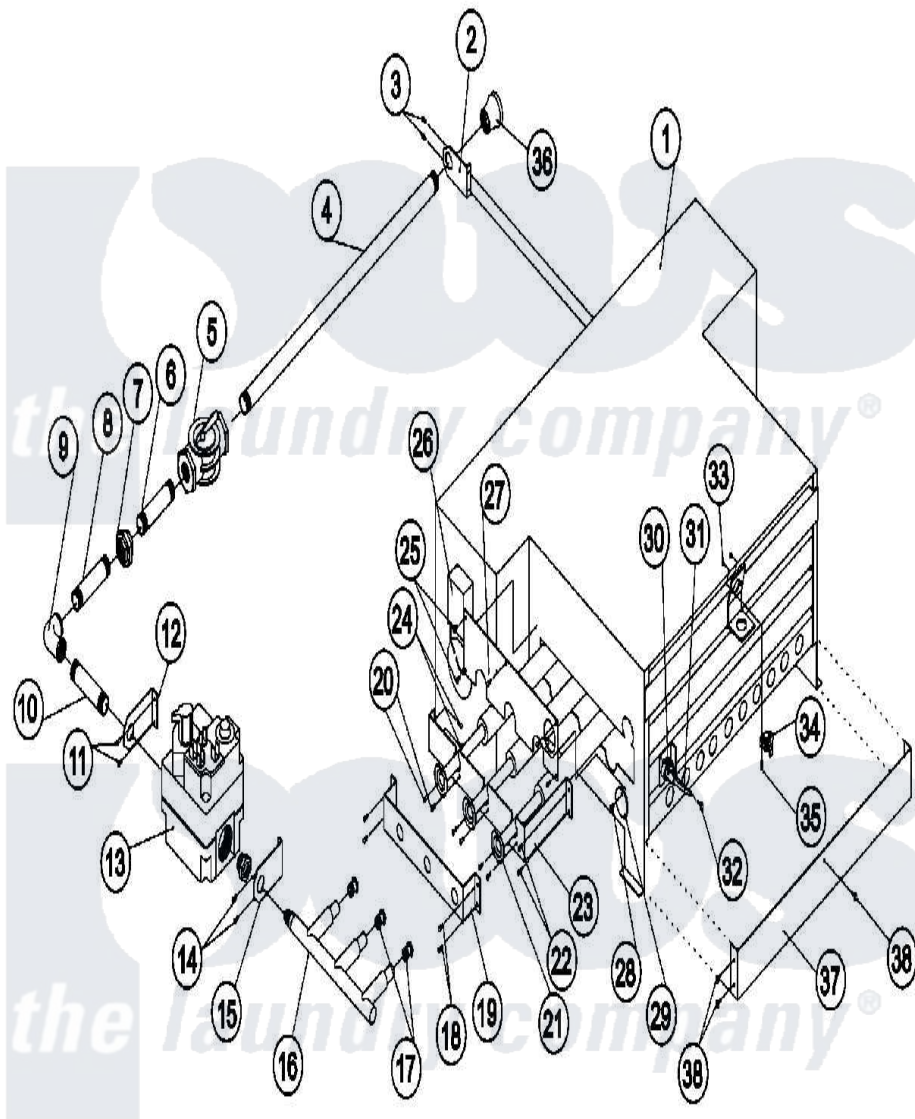


# Maytag MDG120PHVW 14 - DSI BURNER ASSEMBLY



Maytag [Commercial Maytag MDG120PHVW Dryer Parts](#) Parts Diagram 14 - DSI BURNER ASSEMBLY  
 Click on the part number to view part

Item	Original Part Number	Replaced By	Status	Part Description
000	<a href="#">A000000</a>			Order Part From American Dryer Phone No.508-678-9000
001	A820201	<a href="#">820201</a>		Ad-130 Bur
"	A880874	<a href="#">W10148072</a>		AD115 120
"	A880875	<a href="#">W10148073</a>		AD115 120
"	A880886	<a href="#">W10148077</a>		Ad-120 Ds
002	A331291	<a href="#">331291</a>		Ud80 Ad120
003	A150309	<a href="#">W10146761</a>		10-16 X 1
004	A142813		Not Available	NIPPLE (3/4" X 32 1/2")
005	A141300	<a href="#">141300</a>		3 4 GAS S
006	A142701	<a href="#">142701</a>		3 4 Close
007	A142601	<a href="#">142601</a>		3 4 Black
008	A142710	<a href="#">142710</a>		3 4 X 4
009	A142504	<a href="#">142504</a>		3 4 X 3 4
010	A142734	<a href="#">142734</a>		3 4 X 5 1
011	A150413		Not Available	SCREW, CRIMPTITE (No.10-16 X 1/2" PH.)

012	A331291	<a href="#">331291</a>		Ud80 Ad120
013	A140026	<a href="#">140026</a>		3 4 X 3 4
"	A140411		Not Available	CONVERSION KIT (1/2" 24 VAC GAS VALVE (L.P.) W/O ORIFICES
014	A150309	<a href="#">W10146761</a>		10-16 X 1
015	A331291	<a href="#">331291</a>		Ud80 Ad120
016	A141208		Not Available	MANIFOLD, 3-PORT
017	A140819	<a href="#">140819</a>		Burner Ori
"	A140832	<a href="#">140832</a>		Burner Ori
018	A150309	<a href="#">W10146761</a>		10-16 X 1
019	A331288	<a href="#">331288</a>		Ad-120 Man
020	A150309	<a href="#">W10146761</a>		10-16 X 1
021	A141110		Not Available	TUBE, BURNER (ONLY)
022	A150309	<a href="#">W10146761</a>		10-16 X 1
023	A331287	<a href="#">331287</a>		Ad-120 Bur
024	A150309	<a href="#">W10146761</a>		10-16 X 1
025	A150309	<a href="#">W10146761</a>		10-16 X 1
026	A802801	<a href="#">802801</a>		Sail Switch
027	A331289	<a href="#">331289</a>		Ad-120 Bur
028	A150413		Not Available	SCREW, CRIMPTITE (No.10-16 X 1/2" PH.)
029	A331290	<a href="#">331290</a>		120-410 Ig
030	A305410	<a href="#">305410</a>		Main Wire Harness
"	A880325	<a href="#">W10148001</a>		DSI Ignitor
031	A880330	<a href="#">W10148002</a>		DSI Ignitor
032	A150413		Not Available	SCREW, CRIMPTITE (No.10-16 X 1/2" PH.)
033	A151000	<a href="#">WH12X195</a>		Switch Assembly
034	A130201		Not Available	HI-LIMIT (330 DEG.)
035	A150001	<a href="#">150001</a>		6-32 X 1 2
036	A142924	<a href="#">142924</a>		1 To 3 4
037	A332256		Not Available	BAFFLE, BURNER (LP MDLS, ONLY)
038	A150309	<a href="#">W10146761</a>		10-16 X 1

