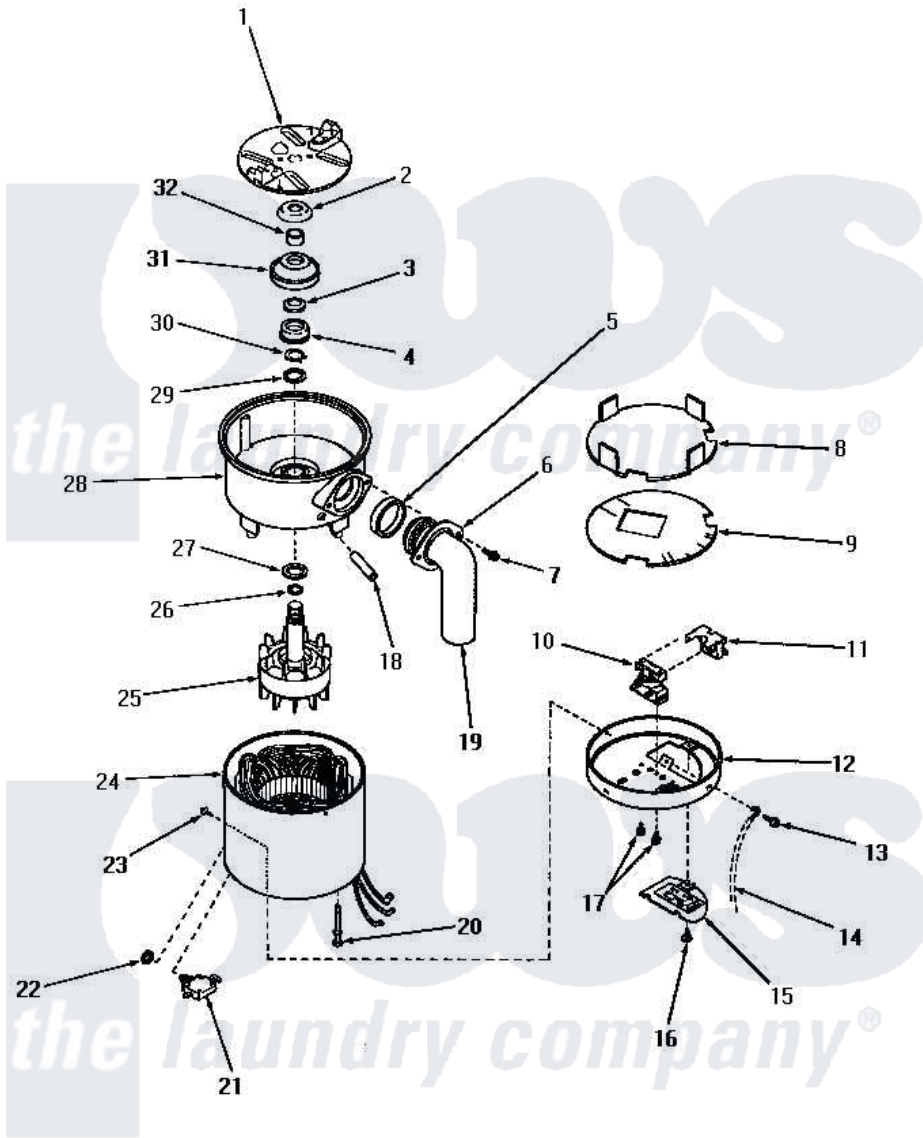


# Amana DB8181N 02 - MOTOR ASSY



## MOTOR ASSEMBLY

Amana [Residential Amana DB8181N Washer Parts](#) Parts Diagram 02 - MOTOR ASSY  
 Click on the part number to view part

Item	Original Part Number	Replaced By	Status	Part Description
1	80840		Not Available	FLYWHEEL AND IMPELLERS
2	Y80843		Not Available	UPPER SLINGER
3	Y80847		Not Available	LOWER SLINGER
4	Y80848		Not Available	BEARING CLOSURE
5	80856	<a href="#">80-856</a>		Use 80-220
"	80885		Not Available	FOR PHENOLIC DRAIN (ELBOW)
6	Y80853		Not Available	FLANGE
7	Y80854		Not Available	HEX HEAD SCREW
8	Y80862		Not Available	INSULATION
9	Y80926		Not Available	INSULATION
10	Y80865		Not Available	START RELAY
11	Y80871		Not Available	OVERLOAD PROTECTOR
12	80868		Not Available	COVER
13	80924	<a href="#">80-924</a>		On/Off Push-Button Switch
14	Y00000000		Not Available	SEE NOTE GROUND WIRE
15	80869		Not Available	ACCESS PLATE

16	Y80870	Not Available	PHILLIPS HEAD SCREW
17	80866	Not Available	PHILLIPS HEAD SCREW
18	Y80852	Not Available	TUBE
19	Y80855	Not Available	FRAIN ELBOW
20	Y80857	Not Available	BOLT
21	80867	Not Available	OVERLOAD PROTECTOR
22	Y80872	Not Available	NUT
23	80927	Not Available	PHILLIPS HEAD SCREW
24	80860	Not Available	STATOR xREPLACE
25	Y80859	Not Available	ROTOR AND SHAFT
26	80846	Not Available	O-RING
27	Y80861	Not Available	FELT WASHER
28	Y80851	Not Available	SHREDDER HOUSING
29	80850	Not Available	THRUST WASHER
30	Y80849	Not Available	RETAINER RING
31	80845	Not Available	SEAL
32	80844	Not Available	BUSHING SEAL

