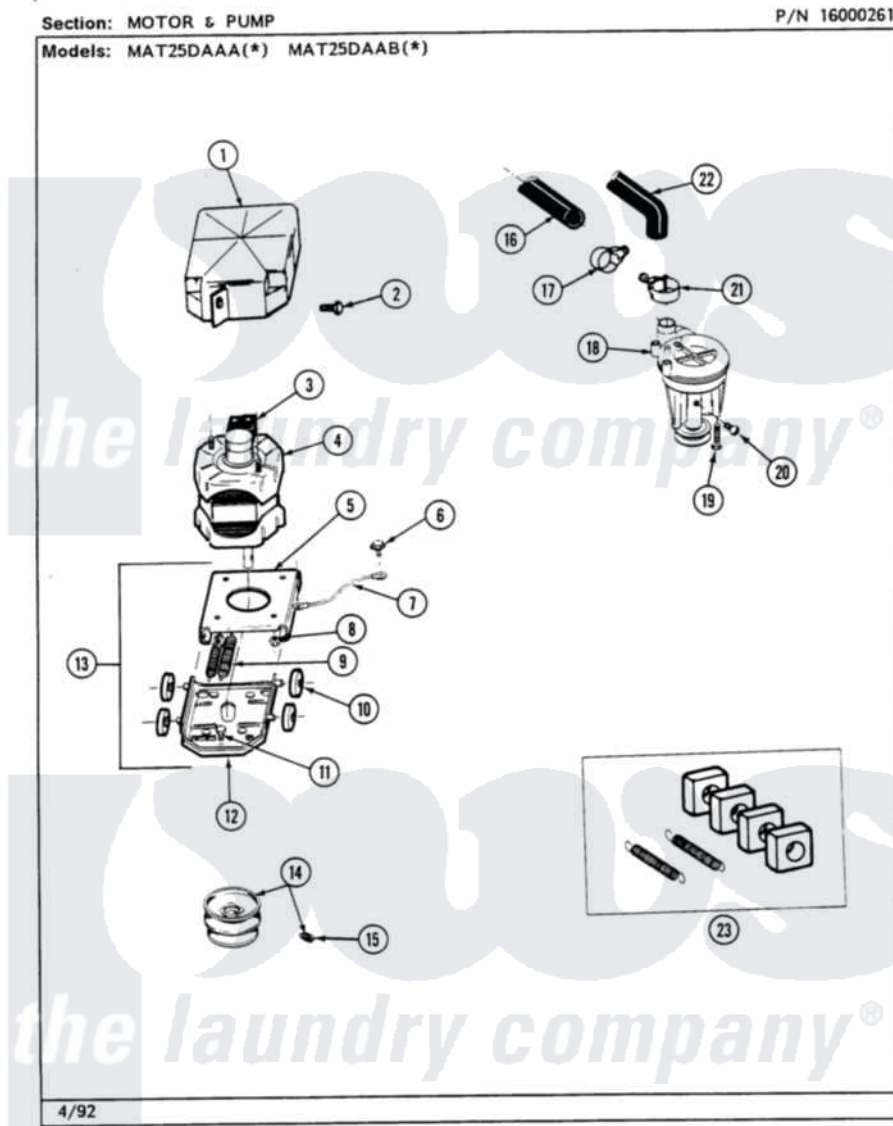


# Maytag MAT25DAABL 10 - MOTOR & PUMP



Maytag [Residential Maytag MAT25DAABL Washer Parts](#) Parts Diagram 10 - MOTOR & PUMP  
 Click on the part number to view part

Item	Original Part Number	Replaced By	Status	Part Description
001	<a href="#">215098</a>			Shield, Motor
002	213121	<a href="#">3400111</a>		Screw, 12-14 X 5/8
003	205132		Not Available	SWITCH, MOTOR EXTERNAL START No.201664-14,205463-4 & 201800-4
"	205133		Not Available	(PROD. IDNo. 2-1664-8 & 2-5463)
"	206505		Not Available	PROD. No.201664-15, & No.205463-3.
"	NLA		Not Available	SWITCH, MOTOR EXTERNAL START
004	201805	<a href="#">12002351</a>		Motor-Drve
005	<a href="#">214956</a>			Motor Mount Assembly
006	210186	<a href="#">3370225</a>		Screw
007	<a href="#">901220</a>			Ground Wire
008	Y311426	<a href="#">3400029</a>		Nut, Adapter Plate
009	<a href="#">202718</a>			Springs, Tension
010	Y204998	<a href="#">205000</a>		Roller And Spring Kit 4+Spr

011	<a href="#">Y313561</a>		Screw---NA
012	<a href="#">205908</a>		Motor Mount Assembly
013	<a href="#">205999</a>		Motor Mount Assembly
014	200816	<a href="#">6-2008160</a>	Pulley- MO
015	<a href="#">Y053241</a>		Set Screw, Motor Pulley
016	215057	<a href="#">211704</a>	Hose, Drain
017	200461	<a href="#">285655</a>	Clamp, Hose
018	202203	<a href="#">6-2022030</a>	Pump As Pa
019	<a href="#">211880</a>		Screw, HeX Head No.10 X 1/2 Inc
020	Y015408	<a href="#">22003235</a>	Screw, Bearing Insert
021	202574	<a href="#">3367052</a>	Clamp, Hose
022	<a href="#">Y212989</a>		Hose, Outer Tub To Pump
023	<a href="#">205000</a>		Roller And Spring Kit 4+Spr

*the laundry company*<sup>®</sup>

**Howes**  
*the laundry company*<sup>®</sup>

**Howes**  
*the laundry company*<sup>®</sup>