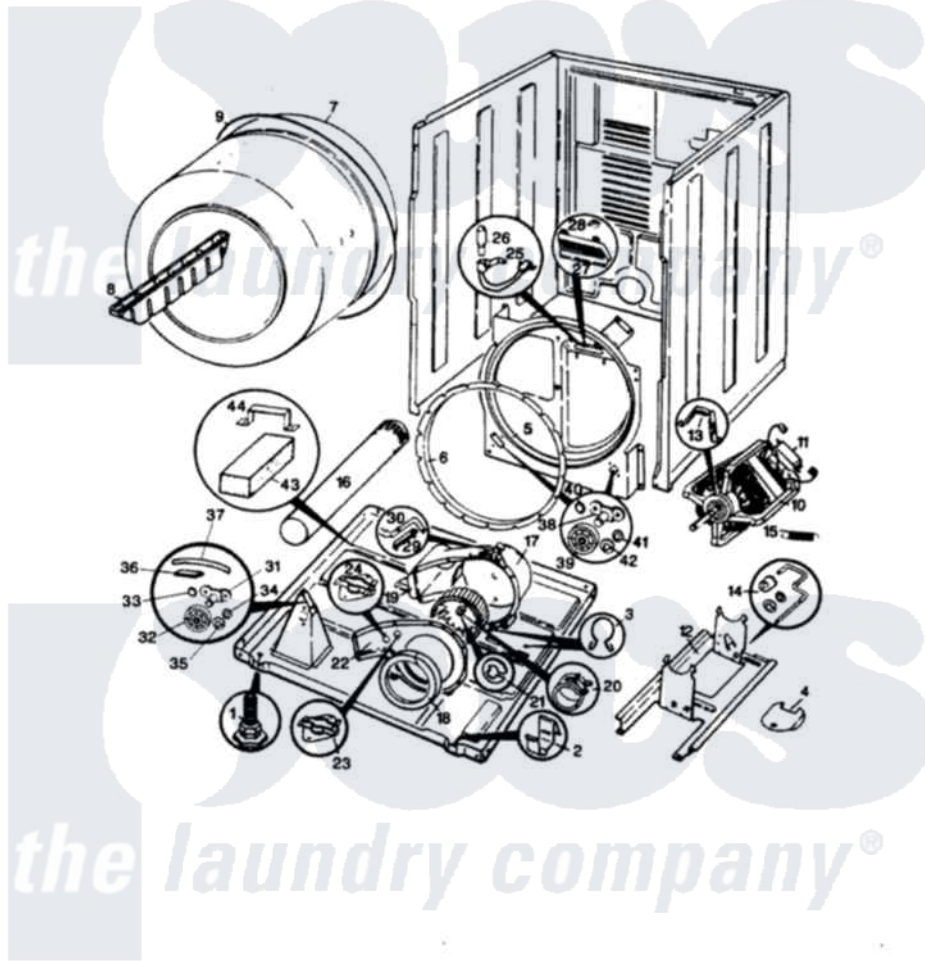


Norge DGM202H 02 - CYLINDER & DRIVE (REV.A-D)

SECTION: CYLINDER & DRIVE
 MODEL: DGM202



Issue Date: 6/90

Norge Residential Norge DGM202H Dryer Parts Parts Diagram 02 - CYLINDER & DRIVE (REV.A-D)
 Click on the part number to view part

Item	Original Part Number	Replaced By	Status	Part Description
1	63-5519		Not Available	LEG, LEVELING
2	53-0120			Clip, Front Panel
3	25-7027	16515		Clip
4	53-0153		Not Available	SHIELD, WIRING
"	25-7741	W10116760		Screw
5	25-7733	681414		Screw, 10AB X 1/2
"	53-0131	LA-1054		Dryer Bulkhead Kit
6	53-0282	31001637		Seal Assembly, Cylinder Front
7	53-0178	53-1250		Cylinder
8	25-7759	3196164		Screw
"	53-0117		Not Available	BAFFLE, GRAY
9	53-1080	341241		Belt
"	LA-1004			Motor Mtg. Kit
10	53-1041	LA-1004		Motor Mtg. Kit
11	53-0936	LA-1004		Motor Mtg. Kit
12	53-0852		Not Available	MOTOR BRACKET

"	25-7811		Not Available	SCREW
13	53-0214	660658		Clamp, Motor Mounting 343481 685441
"	25-7674			Screw
14	53-1650		Not Available	IDLER ASSY
"	53-1628	31001344		Pulley, Idler
"	53-0764	53-2366		Idler Arm
15	53-0207		Not Available	IDLER SPRING
"	53-1648			Idler Spring
16	25-2134	W10116760		Screw
"	53-0134			Duct, Exhaust
17	53-0774		Not Available	BLOWER HOUSING
18	53-1023			Blower Cover
"	53-0203	12001324		Duct Kit, Collector
19	53-0106			Blower Wheel
20	25-7823	312967		Clamp, Blower Housing
21	25-7855			Ring, Retaining
22	53-1023			Blower Cover
"	25-7807	33002917		Screw, No.10-16
23	53-1107			Thermostat, Control
24	W10124350		Not Available	NOT REQUIRED PART OR SEE NOTE NOT REQUIRED
"	25-2134	W10116760		Screw
25	W10124350		Not Available	NOT REQUIRED PART OR SEE NOTE NOT REQUIRED
26	W10124350		Not Available	NOT REQUIRED PART OR SEE NOTE NOT REQUIRED
27	W10124350		Not Available	NOT REQUIRED PART OR SEE NOTE NOT REQUIRED
28	LA-1006			Glide Kit, Tumbler
"	W10124350		Not Available	NOT REQUIRED PART OR SEE NOTE NOT REQUIRED
29	53-0182	31001356		Pad, Glide
30	53-0183	31001469		Glide, Tumbler
31	W10124350		Not Available	NOT REQUIRED PART OR SEE NOTE NOT REQUIRED
32	W10124350		Not Available	NOT REQUIRED PART OR SEE NOTE NOT REQUIRED
33	W10124350		Not Available	NOT REQUIRED PART OR SEE NOTE NOT REQUIRED
34	W10124350		Not Available	NOT REQUIRED PART OR SEE NOTE NOT REQUIRED
35	W10124350		Not Available	NOT REQUIRED PART OR SEE NOTE NOT REQUIRED
36	53-0723	31001356		Pad, Glide
37	53-0185	31001470		Glide, Tumbler
"	LA-1008			Rr Roller Kit
38	53-0197			Support Assembly-Cylinder Rear
"	25-7101	3351614		Screw, Gearcase Cover Mounting
39	53-0642	31001096		Roller
40	25-7813			Spacer
41	25-7814			Washer
42	25-7854			Ring, Retaining
43	53-0645		Not Available	COUNTERWEIGHT
44	53-0644		Not Available	BRACKET
45	63-5577		Not Available	MANUAL, USE & CARE

